

36-3518: Anti-CD8A (Cytotoxic- & Suppressor T-Cell Marker) Polyclonal Antibody

Clonality :	Polyclonal
Clone Name :	N/A
Application :	FACS,IF,IHC
Reactivity :	Human
Gene :	CD8A
Gene ID :	925
Uniprot ID :	P01732
Alternative Name :	CD8 antigen, alpha polypeptide (p32), T8/Leu-2 T-lymphocyte differentiation antigen, Ly3, LYT3, MAL, T-cell surface glycoprotein CD8 alpha chain
Isotype :	Rabbit IgG
Immunogen Information :	Recombinant full-length human CD8a protein

Description

CD8 is a cell surface receptor expressed either as a heterodimer with the CD8 beta chain (CD8 alpha/beta) or as a homodimer (CD8 alpha/alpha). A majority of thymocytes and a subpopulation of mature T cells and NK cells express CD8a. CD8 binds to MHC class 1 and through its association with protein tyrosine kinase p56lck plays a role in T cell development and activation of mature T cells. For mature T-cells, CD4 and CD8 are mutually exclusive, so anti-CD8, generally used in conjunction with anti-CD4. It is a useful marker for distinguishing helper/inducer T-lymphocytes, and most peripheral T-cell lymphomas are CD4+/CD8-. Anaplastic large cell lymphoma is usually CD4+ and CD8-, and in T-lymphoblastic lymphoma/leukemia, CD4 and CD8 are often co-expressed. CD8 is also found in littoral cell angioma of the spleen.

Product Info

Amount :	20 µg / 100 µg
Content :	200 µg/ml of Ab Purified by Protein A. Prepared in 10mM PBS with 0.05% BSA & 0.05% azide. Also available WITHOUT BSA & azide at 1.0mg/ml.
Storage condition :	Antibody with azide - store at 2 to 8°C. Antibody without azide - store at -20 to -80°C. Antibody is stable for 24 months. Non-hazardous.

Application Note

Flow Cytometry (1-2ug/million cells); Immunofluorescence (1-2ug/ml); Immunohistochemistry (Formalin-fixed) (1-2ug/ml for 30 minutes at RT)(Staining of formalin-fixed tissues requires heating tissue sections in 10mM Tris with 1mM EDTA, pH 9.0, for 45 min at 95°C followed by cooling at RT for 20 minutes);

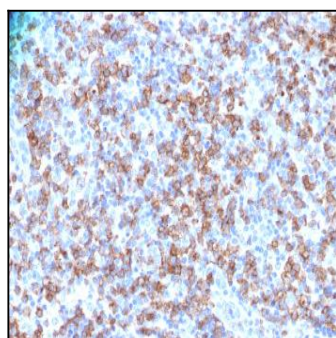


Fig. 1: Formalin-fixed, paraffin-embedded human Lymphoma stained with CD8a Rabbit Polyclonal Antibody.