

36-3514: Anti-CD8A (Cytotoxic / Suppressor T-Cell Marker) Monoclonal Antibody(Clone: C8/1035)

Clonality :	Monoclonal
Clone Name :	C8/1035
Application :	FACS,ELISA
Reactivity :	Human
Gene :	CD8A
Gene ID :	925
Uniprot ID :	P01732
Alternative Name :	CD8 antigen, alpha polypeptide (p32), T8/Leu-2 T-lymphocyte differentiation antigen, Ly3, LYT3, MAL, T-cell surface glycoprotein CD8 alpha chain
Isotype :	Mouse IgG1, kappa
Immunogen Information :	Recombinant full-length human CD8a protein

Description

CD8 is a cell surface receptor expressed either as a heterodimer with the CD8 beta chain (CD8 alpha/beta) or as a homodimer (CD8 alpha/alpha). A majority of thymocytes and a subpopulation of mature T cells and NK cells express CD8a. CD8 binds to MHC class 1 and through its association with protein tyrosine kinase p56lck plays a role in T cell development and activation of mature T cells. For mature T-cells, CD4 and CD8 are mutually exclusive, so anti-CD8, generally used in conjunction with anti-CD4. It is a useful marker for distinguishing helper/inducer T-lymphocytes, and most peripheral T-cell lymphomas are CD4+/CD8-. Anaplastic large cell lymphoma is usually CD4+ and CD8-, and in T-lymphoblastic lymphoma/leukemia, CD4 and CD8 are often co-expressed. CD8 is also found in littoral cell angioma of the spleen.

Product Info

Amount :	20 µg / 100 µg
Content :	200 µg/ml of Ab Purified from Bioreactor Concentrate by Protein A/G. Prepared in 10mM PBS with 0.05% BSA & 0.05% azide. Also available WITHOUT BSA & azide at 1.0mg/ml.
Storage condition :	Antibody with azide - store at 2 to 8°C. Antibody without azide - store at -20 to -80°C. Antibody is stable for 24 months. Non-hazardous.

Application Note

Flow Cytometry (0.5-1ug/million cells); ELISA (For coating, order Ab without BSA);

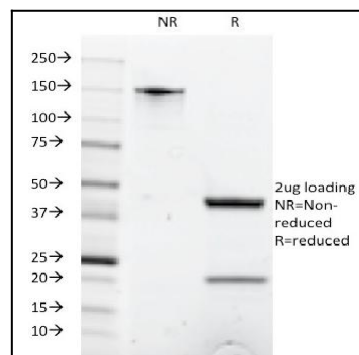


Fig. 1: SDS-PAGE Analysis Purified CD8A Mouse Monoclonal Antibody (C8/1035). Confirmation of Integrity and Purity of Antibody.