

## 36-3487: Anti-CD4 (T-Helper/Inducer Cell Marker) Monoclonal Antibody(Clone: EDU-2)

<b>Clonality :</b>	Monoclonal
<b>Clone Name :</b>	EDU-2
<b>Application :</b>	Functional Assay,FACS,IF
<b>Reactivity :</b>	Human
<b>Gene :</b>	CD4
<b>Gene ID :</b>	920
<b>Uniprot ID :</b>	P01730
<b>Alternative Name :</b>	L3T4; Leu3; Ly-4; Lymphocyte antigen CD4; p55; T cell antigen T4/LEU3; T cell differentiation antigen L3T4; T-cell surface antigen T4/Leu-3; T-cell surface glycoprotein CD4
<b>Isotype :</b>	Mouse IgG2a, kappa
<b>Immunogen Information :</b>	Stimulated human leukocytes

### Description

Recognizes a protein of 55kDa, identified as CD4. It is a membrane glycoprotein of T lymphocytes that interacts with major histocompatibility complex class II antigens and is also a receptor for the human immunodeficiency virus. This protein is expressed not only in T lymphocytes, but also in B cells, macrophages, and granulocytes. It is also expressed in specific regions of the brain. The protein functions to initiate or augment the early phase of T-cell activation, and may function as an important mediator of indirect neuronal damage in infectious and immune-mediated diseases of the central nervous system. Multiple alternatively spliced transcript variants encoding different isoforms have been identified. This MAb was characterized as human CD4 antibody at II and IV International Workshop on Human Leukocyte Differentiation Antigens.

### Product Info

<b>Amount :</b>	20 µg / 100 µg
<b>Content :</b>	200 µg/ml of Ab Purified from Bioreactor Concentrate by Protein A/G. Prepared in 10mM PBS with 0.05% BSA & 0.05% azide. Also available WITHOUT BSA & azide at 1.0mg/ml.
<b>Storage condition :</b>	Antibody with azide - store at 2 to 8°C. Antibody without azide - store at -20 to -80°C. Antibody is stable for 24 months. Non-hazardous.

### Application Note

Functional Studies (Order Ab without azide); Flow Cytometry (1-2ug/million cells); Immunofluorescence (1-2ug/ml);

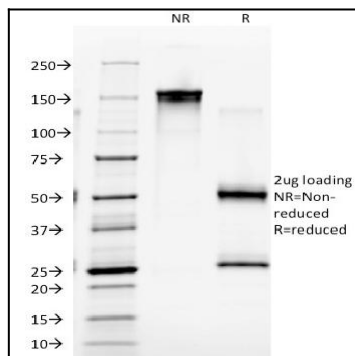


Fig. 1: SDS-PAGE Analysis Purified CD4 Mouse Monoclonal Antibody (EDU-2). Confirmation of Integrity and Purity of Antibody.