

36-3481: Anti-CD3e (T-Cell Marker) Monoclonal Antibody(Clone: C3e/3125R)

| | |
|--------------------------------|--|
| Clonality : | Monoclonal |
| Clone Name : | C3e/3125R |
| Application : | WB,IHC |
| Reactivity : | Human |
| Gene : | CD3E |
| Gene ID : | 916 |
| Uniprot ID : | P07766 |
| Alternative Name : | CD3 epsilon; CD3 TCR complex; T cell antigen receptor complex epsilon subunit of T3; T-cell surface antigen T3/Leu-4 epsilon chain; T-cell surface glycoprotein CD3 epsilon chain; T3E; TCRE; TiT3 complex |
| Isotype : | Rabbit IgG |
| Immunogen Information : | Recombinant human CD3e fragment (around aa 23-119) (exact sequence is proprietary) |

Description

Recognizes the epsilon-chain of CD3, which consists of five different polypeptide chains (designated as gamma, delta, epsilon, zeta, and eta) with MW ranging from 16-28kDa. The CD3 complex is closely associated at the lymphocyte cell surface with the T cell antigen receptor (TCR). Reportedly, CD3 complex is involved in signal transduction to the T cell interior following antigen recognition. The CD3 antigen is first detectable in early thymocytes and probably represents one of the earliest signs of commitment to the T cell lineage. In cortical thymocytes, CD3 is predominantly intra-cytoplasmic. However, in medullary thymocytes, it appears on the T cell surface. CD3 antigen is a highly specific marker for T cells, and is present in majority of T cell neoplasms.

Product Info

| | |
|----------------------------|---|
| Amount : | 20 µg / 100 µg |
| Content : | 200 µg/ml of Ab Purified from Bioreactor Concentrate by Protein A/G. Prepared in 10mM PBS with 0.05% BSA & 0.05% azide. Also available WITHOUT BSA & azide at 1.0mg/ml. |
| Storage condition : | Antibody with azide - store at 2 to 8°C. Antibody without azide - store at -20 to -80°C. Antibody is stable for 24 months. Non-hazardous. |

Application Note

Western Blot (1-2ug/ml); ,Immunohistochemistry (Formalin-fixed) (1-2ug/ml for 30 minutes at RT),(Staining of formalin-fixed tissues requires heating tissue sections in 10mM Tris with 1mM EDTA, pH 9.0, for 45 min at 95 °C followed by cooling at RT for 20 minutes),

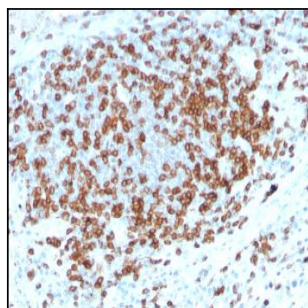


Fig. 1: Formalin-fixed, paraffin-embedded human Tonsil stained with CD3e Rabbit Recombinant Monoclonal Antibody (C3e/3125R).

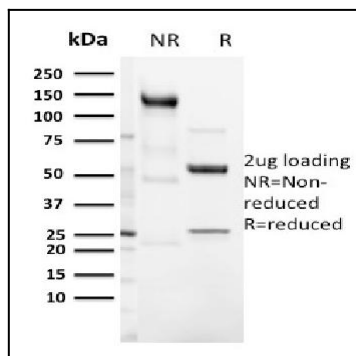


Fig. 2: SDS-PAGE Analysis Purified CD3e Rabbit Recombinant Monoclonal Antibody (C3e/3125R). Confirmation of Integrity and Purity of Antibody.

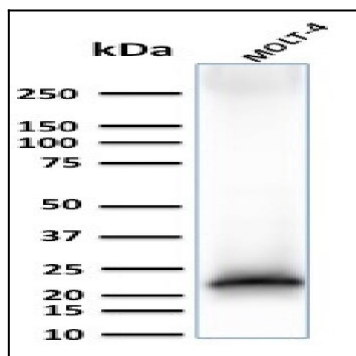


Fig. 3: Western Blot Analysis of MOLT-4 cell lysate using CD3e Rabbit Recombinant Monoclonal Antibody (C3e/3125R).