

36-3479: Anti-CD3e (T-Cell Marker) Monoclonal Antibody(Clone: C3e/1308)

Clonality :	Monoclonal
Clone Name :	C3e/1308
Application :	WB,FACS
Reactivity :	Human
Gene :	CD3E
Gene ID :	916
Uniprot ID :	P07766
Alternative Name :	CD3 epsilon, CD3 TCR complex, CD3e antigen epsilon polypeptide (TiT3 complex), T-cell surface antigen T3/Leu-4 epsilon chain, T-cell surface glycoprotein CD3 epsilon chain, T3E, TCRE, TiT3 complex
Isotype :	Mouse IgG2b, kappa
Immunogen Information :	Recombinant human CD3e fragment (aa 23-119)

Description

Recognizes the epsilon-chain of CD3, which consists of five different polypeptide chains (designated as gamma, delta, epsilon, zeta, and eta) with MW ranging from 16-28kDa. The CD3 complex is closely associated at the lymphocyte cell surface with the T cell antigen receptor (TCR). Reportedly, CD3 complex is involved in signal transduction to the T cell interior following antigen recognition. The CD3 antigen is first detectable in early thymocytes and probably represents one of the earliest signs of commitment to the T cell lineage. In cortical thymocytes, CD3 is predominantly intra-cytoplasmic. However, in medullary thymocytes, it appears on the T cell surface. CD3 antigen is a highly specific marker for T cells, and is present in majority of T cell neoplasms.

Product Info

Amount :	20 µg / 100 µg
Content :	200 µg/ml of Ab Purified from Bioreactor Concentrate by Protein A/G. Prepared in 10mM PBS with 0.05% BSA & 0.05% azide. Also available WITHOUT BSA & azide at 1.0mg/ml.
Storage condition :	Antibody with azide - store at 2 to 8°C. Antibody without azide - store at -20 to -80°C. Antibody is stable for 24 months. Non-hazardous.

Application Note

Western Blot (1-2ug/ml for 60 minutes at RT);,Flow Cytometry (1-2ug/million cells);,

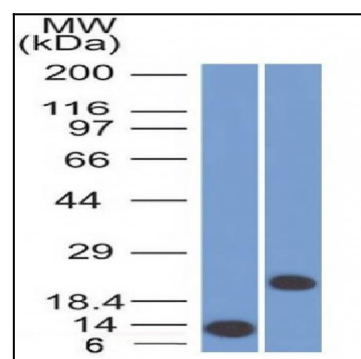


Fig. 1: Western Blot Analysis of recombinant CD3e and Jurkat cell lysate using CD3e Monoclonal Antibody (C3e/1308).

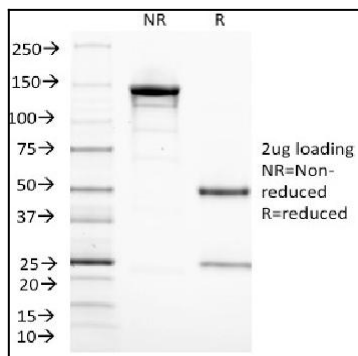


Fig. 2: SDS-PAGE Analysis Purified CD3 epsilon Monoclonal Antibody (C3e/1308). Confirmation of Integrity and Purity of Antibody.

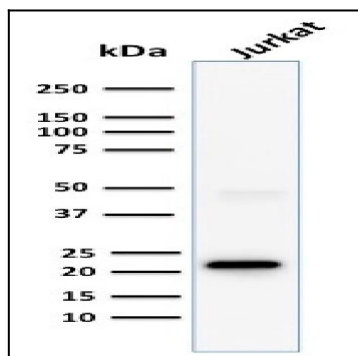


Fig. 3: Western Blot Analysis of human Jurkat cell lysate using CD3e Monoclonal Antibody (C3e/1308).

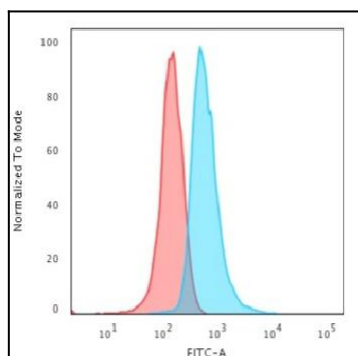


Fig. 4: Flow Cytometric Analysis of Jurkat cells using CD3e Monoclonal Antibody (C3e/1308) followed by Goat anti-Mouse IgG-CF488 (Blue); Isotype Control (Red).