

### 36-3477: Anti-CD3e (T-Cell Marker) Monoclonal Antibody(Clone: OKT3)

<b>Clonality :</b>	Monoclonal
<b>Clone Name :</b>	OKT3
<b>Application :</b>	FACS,IHC,IF,Functional Assay
<b>Reactivity :</b>	Human
<b>Gene :</b>	CD3E
<b>Gene ID :</b>	916
<b>Uniprot ID :</b>	P07766
<b>Alternative Name :</b>	CD3 epsilon, CD3 TCR complex, CD3e antigen epsilon polypeptide (TiT3 complex), T cell antigen receptor complex epsilon subunit of T3, T-cell surface antigen T3/Leu-4 epsilon chain, T-cell surface glycoprotein CD3 epsilon chain, T3E
<b>Isotype :</b>	Mouse IgG2a, kappa
<b>Immunogen Information :</b>	Human PBMCs

#### Description

Recognizes the epsilon-chain of CD3, which consists of five different polypeptide chains (designated as gamma, delta, epsilon, zeta, and eta) with MW ranging from 16-28kDa. It is found on all mature T-lymphocytes, NK, T-cells, and some thymocytes. CD3, also known as T3, is a member of the immunoglobulin superfamily that plays a role in antigen recognition, signal transduction, and T cell activation. It is expressed, typically at high levels, on peripheral T cells and majority of T cell neoplasms. Thymocytes express CD3 at different level on the cell surface in the course of differentiation and, in cortical thymus, CD3 is predominantly Intracytoplasmic. This MAb has been reported to have potent immunosuppressive properties in vivo and has been proven effective in the treatment of renal, heart and liver allograft rejection.

#### Product Info

<b>Amount :</b>	20 µg / 100 µg
<b>Content :</b>	200 µg/ml of Ab Purified from rabbit anti-serum by Protein A. Prepared in 10mM PBS with 0.05% BSA & 0.05% azide. Also available WITHOUT BSA at 1.0mg/ml.
<b>Storage condition :</b>	Antibody with azide - store at 2 to 8°C. Antibody without azide - store at -20 to -80°C. Antibody is stable for 24 months. Non-hazardous.

#### Application Note

Flow Cytometry (0.5-1ug/million cells); ,Immunohistochemistry (acetone fixed frozen sections); ,Immunofluorescence (1-2ug/ml); ,Functional Studies (Order Ab without Azide);,

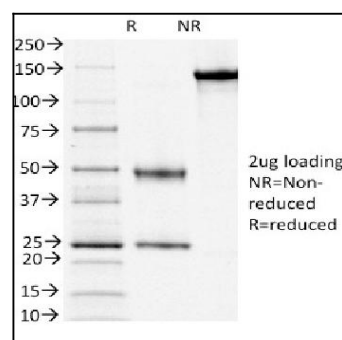


Fig. 1: SDS-PAGE Analysis Purified CD3e Mouse Monoclonal Antibody (OKT3). Confirmation of Purity and Integrity of Antibody.