

## 36-3457: Anti-CD1c Monoclonal Antibody(Clone: CD1C/1603)

<b>Clonality :</b>	Monoclonal
<b>Clone Name :</b>	CD1C/1603
<b>Application :</b>	ELISA
<b>Reactivity :</b>	Human
<b>Gene :</b>	CD1C
<b>Gene ID :</b>	911
<b>Uniprot ID :</b>	P29017
<b>Alternative Name :</b>	BDCA1; CD1; CD1A; CD1c; CD1C antigen c polypeptide; CD1c molecule; Cortical thymocyte antigen CD1C; Differentiation antigen CD1 alpha 3; R7; T cell surface glycoprotein CD1c
<b>Isotype :</b>	Mouse IgG1, kappa
<b>Immunogen Information :</b>	Recombinant full-length human CD1c protein

### Description

The CD1 multigene family encodes five forms of the CD1 T-cell surface glycoprotein in human, designated CD1A, 1B, 1C, 1D and 1E. CD1, a type 1 membrane protein, has structural similarity to the MHC class I antigen and has been shown to present lipid antigens for recognition by T lymphocytes. CD1 antigens are associated with  $\beta$ -2-Microglobulin and expressed on cortical thymocytes, Langerhans cells, a B cell subset and some dendritic cells. Specifically, CD1A is a marker for Langerhans cell histiocytosis (LCH) and is found on interdigitating cells. Adaptor-protein complexes and CD1-associated chaperones control CD1 trafficking, and the development and activation of CD1-restricted T cells. Constitutive endocytosis of CD1B molecules and the differential sorting of MHC class II from lysosomes separate peptide- and lipid antigen-presenting molecules during dendritic cell maturation. CD1B is also expressed in interdigitating cells. The human CD1 genes are all closely linked in a cluster mapping at chromosome 1q23.1

### Product Info

<b>Amount :</b>	20 $\mu$ g / 100 $\mu$ g
<b>Content :</b>	200 $\mu$ g/ml of Ab Purified from Bioreactor Concentrate by Protein A/G. Prepared in 10mM PBS with 0.05% BSA & 0.05% azide. Also available WITHOUT BSA & azide at 1.0mg/ml.
<b>Storage condition :</b>	Antibody with azide - store at 2 to 8°C. Antibody without azide - store at -20 to -80°C. Antibody is stable for 24 months. Non-hazardous.

### Application Note

ELISA (For coating, order Ab without BSA);

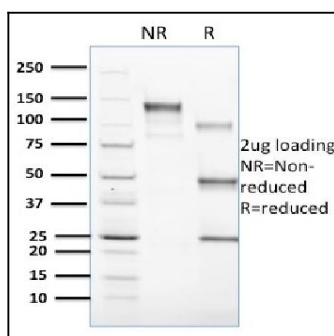


Fig. 1: SDS-PAGE Analysis Purified CD1c Mouse Monoclonal Antibody (CD1C/1603). Confirmation of Purity and Integrity of Antibody.