

## 36-3451: Anti-CD1a / HTA1 (Mature Langerhans Cells Marker) Monoclonal Antibody(Clone: CB-T6)

<b>Clonality :</b>	Monoclonal
<b>Clone Name :</b>	CB-T6
<b>Application :</b>	FACS,IF
<b>Reactivity :</b>	Human, Mouse
<b>Gene :</b>	CD1A
<b>Gene ID :</b>	909
<b>Uniprot ID :</b>	P06126
<b>Alternative Name :</b>	Cortical thymocyte antigen CD1A, Epidermal dendritic cell marker CD1a, FCB6, HTA1, T cell surface antigen T6 / Leu 6, T-Cell Surface Glycoprotein CD1A
<b>Isotype :</b>	Mouse IgG2b, kappa
<b>Immunogen Information :</b>	Human CD1a

### Description

At least five CD1 genes (CD1a, b, c, d, and e) are identified. CD1 proteins have been demonstrated to restrict T cell response to non-peptide lipid and glycolipid antigens and play a role in non-classical antigen presentation. CD1a is a non-polymorphic MHC Class 1 related cell surface glycoprotein, expressed in association with Beta-2 microglobulin. Anti-CD1a labels Langerhans cell histiocytosis (Histiocytosis X), extranodal histiocytic sarcoma, a subset of T-lymphoblastic lymphoma/leukemia, and interdigitating dendritic cell sarcoma of the lymph node. When combined with antibodies against TTF-1 and CD5, anti-CD1a is useful in distinguishing between pulmonary and thymic neoplasms since CD1a is consistently expressed in thymic lymphocytes in both typical and atypical thymomas, but only focally in 1/6 of thymic carcinomas and not in lymphocytes in pulmonary neoplasms. Anti-CD1a is reported to be a new marker for perivascular epithelial cell tumor (PEComa).

### Product Info

<b>Amount :</b>	20 µg / 100 µg
<b>Content :</b>	200 µg/ml of Ab Purified from Bioreactor Concentrate by Protein A/G. Prepared in 10mM PBS with 0.05% BSA & 0.05% azide. Also available WITHOUT BSA & azide at 1.0mg/ml.
<b>Storage condition :</b>	Antibody with azide - store at 2 to 8°C. Antibody without azide - store at -20 to -80°C. Antibody is stable for 24 months. Non-hazardous.

### Application Note

Flow Cytometry (1-2ug/million cells); Immunofluorescence (1-2ug/ml);

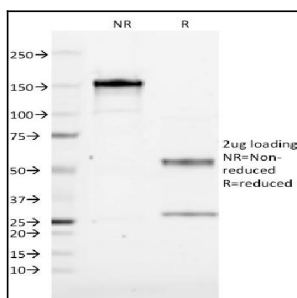


Fig. 1: SDS-PAGE Analysis Purified CD1a Mouse Monoclonal Antibody (CB-T6). Confirmation of Integrity and Purity of Antibody.

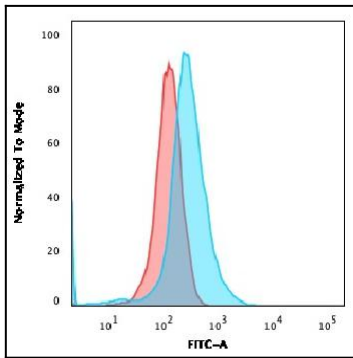


Fig. 2: Flow Cytometric Analysis of MOLT-4 cells using CD1a Mouse Monoclonal Antibody (CB-T6) followed by goat anti-Mouse IgG-CF488 (Blue); Isotype control (Red).