

36-3449: Anti-Cyclin E (G1/S-Phase Cyclin) Monoclonal Antibody(Clone: CCNE1/2587)

| | |
|--------------------------------|--|
| Clonality : | Monoclonal |
| Clone Name : | CCNE1/2587 |
| Application : | ELISA |
| Reactivity : | Human |
| Gene : | CCNE1 |
| Gene ID : | 898 |
| Uniprot ID : | P24864 |
| Alternative Name : | CCNE1; Cyclin E1; G1/S-specific cyclin-E1 |
| Isotype : | Mouse IgG, kappa |
| Immunogen Information : | Recombinant human Cyclin E (CCNE1) protein fragment (around aa 10-176) (exact sequence is proprietary) |

Description

Cyclin E belongs to the highly conserved cyclin family, whose members exhibit distinct expression and degradation patterns which contribute to the temporal coordination of each mitotic event. Cyclins function as regulators of CDK kinases. Cyclin E forms a complex with and functions as a regulatory subunit of CDK2, whose activity is required for cell cycle G1/S transition. Cyclin E accumulates at the G1-S phase boundary and is degraded as cells progress through S phase. Cyclin E overexpression has been observed in many tumors, which results in chromosome instability, and thus may contribute to tumorigenesis.

Product Info

| | |
|----------------------------|---|
| Amount : | 20 µg / 100 µg |
| Content : | 200 µg/ml of Ab Purified from Bioreactor Concentrate by Protein A/G. Prepared in 10mM PBS with 0.05% BSA & 0.05% azide. Also available WITHOUT BSA & azide at 1.0mg/ml. |
| Storage condition : | Antibody with azide - store at 2 to 8°C. Antibody without azide - store at -20 to -80°C. Antibody is stable for 24 months. Non-hazardous. |

Application Note

ELISA (For coating, order Ab without BSA);

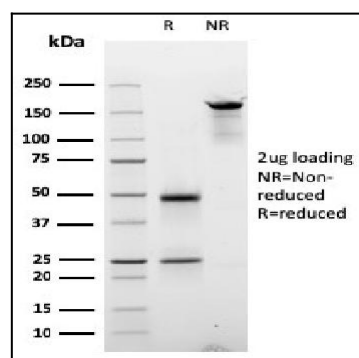


Fig. 1: SDS-PAGE Analysis Purified Cyclin E Mouse Monoclonal Antibody (CCNE1/2587). Confirmation of Integrity and Purity of Antibody.