

## 36-3445: Anti-BCL10 (MALT-Lymphoma Marker) Monoclonal Antibody(Clone: 151)

<b>Clonality :</b>	Monoclonal
<b>Clone Name :</b>	151
<b>Application :</b>	IHC
<b>Reactivity :</b>	Human
<b>Gene :</b>	BCL10
<b>Gene ID :</b>	8915
<b>Uniprot ID :</b>	O95999
<b>Alternative Name :</b>	B-cell CLL/lymphoma 10, B-cell leukemia/lymphoma 10, CARD-containing molecule enhancing NF-kappa-B, CARD-like apoptotic protein, caspase-recruiting domain-containing protein, CED-3/ICH-1 prodomain homologous E10-like regulator, Cellular homolog of vCARMEN, Cellular-E10 (cE10), CIPER, hCLAP, mE10, R-RCD1
<b>Isotype :</b>	Mouse IgG1, kappa
<b>Immunogen Information :</b>	Human BCL10 recombinant protein (epitope aa122-168)

### Description

BCL10, with an N-terminal caspase recruitment domain (CARD), is found in a number of apoptotic regulatory molecules. It was identified through its direct involvement in t(1;14) of mucosa-associated lymphoid tissue (MALT) lymphoma. Expression of BCL10 was shown to induce NF14 translocation, while 55% of MALT lymphomas lacking this translocation exhibited the same labeling pattern, although at a much lower level.

### Product Info

<b>Amount :</b>	20 µg / 100 µg
<b>Content :</b>	200 µg/ml of Ab Purified from Bioreactor Concentrate by Protein A/G. Prepared in 10mM PBS with 0.05% BSA & 0.05% azide. Also available WITHOUT BSA & azide at 1.0mg/ml.
<b>Storage condition :</b>	Antibody with azide - store at 2 to 8°C. Antibody without azide - store at -20 to -80°C. Antibody is stable for 24 months. Non-hazardous.

### Application Note

Immunohistochemistry (Formalin-fixed) (1-2ug/ml for 30 minutes at RT) (Staining of formalin-fixed tissues requires heating tissue sections in 10mM Tris with 1mM EDTA, pH 9.0, for 45 min at 95°C followed by cooling at RT for 20 minutes);

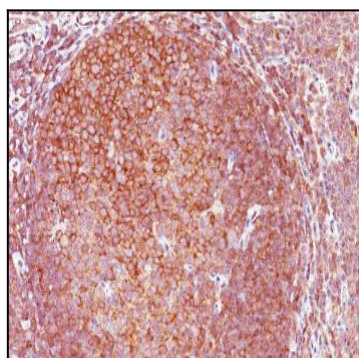


Fig. 1: Formalin-fixed, paraffin-embedded human Tonsil stained with BCL-10 Monoclonal Antibody (151).