

## 36-3442: Anti-Cyclin A2 (S- & G2-phase Cyclin) Monoclonal Antibody(Clone: CCNA2/2333)

<b>Clonality :</b>	Monoclonal
<b>Clone Name :</b>	CCNA2/2333
<b>Application :</b>	IHC
<b>Reactivity :</b>	Human
<b>Gene :</b>	CCNA2
<b>Gene ID :</b>	890
<b>Uniprot ID :</b>	P20248
<b>Alternative Name :</b>	CCN1, CCNA, CCNA2, Cyclin A2
<b>Isotype :</b>	Mouse IgG2a, kappa
<b>Immunogen Information :</b>	Full length recombinant Cyclin A2 protein

### Description

It recognizes a protein of 54kDa, which is identified as cyclin A. Its epitope is located amino acids 144-148 of human Cyclin A2. Cyclins are regulatory subunits of the cyclin-dependent kinases (cdk's) and they control transition at different specific phases of the cell cycle. The temporal expression of cyclins is tightly regulated and subsequently plays a critical role in controlling the enzymatic activity of cdk's. These cyclin/cdk complexes are essential for passage through specific stages in the cell cycle. In mammalian somatic cells, cyclin A is required for S-phase and passage through G2-phase. The D and E type cyclins regulate the passage of G1, while cyclin B is a critical regulator of mitosis. Mutation or disruption of normal cyclin A expression causes cells to arrest in G2-phase.

### Product Info

<b>Amount :</b>	20 µg / 100 µg
<b>Content :</b>	200 µg/ml of Ab Purified from Bioreactor Concentrate by Protein A/G. Prepared in 10mM PBS with 0.05% BSA & 0.05% azide. Also available WITHOUT BSA & azide at 1.0mg/ml.
<b>Storage condition :</b>	Antibody with azide - store at 2 to 8°C. Antibody without azide - store at -20 to -80°C. Antibody is stable for 24 months. Non-hazardous.

### Application Note

Immunohistochemistry (Formalin-fixed) (1-2ug/ml for 30 min at RT)(Staining of formalin-fixed tissues requires heating tissue sections in 10mM Tris with 1mM EDTA, pH 9.0, for 45 min at 95°C followed by cooling at RT for 20 minutes);

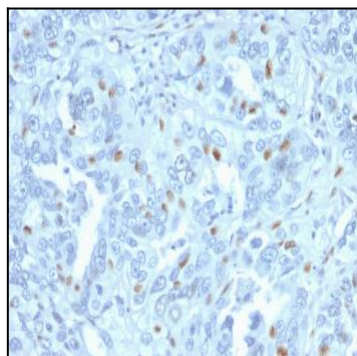


Fig. 1: Formalin-fixed, paraffin-embedded human Endometrial Carcinoma stained with Cyclin A2 Mouse Monoclonal Antibody (CCNA2/2333).

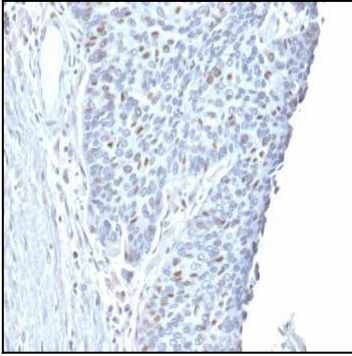


Fig. 2: Formalin-fixed, paraffin-embedded human Endometrial Carcinoma stained with Cyclin A2 Mouse Monoclonal Antibody (CCNA2/2333).

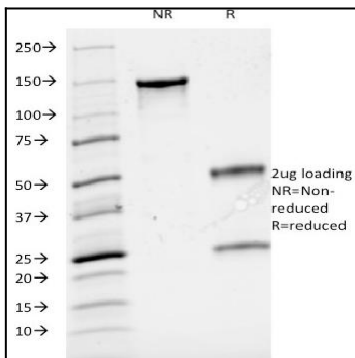


Fig. 3: SDS-PAGE Analysis Purified Cyclin A Mouse Monoclonal Antibody (CCNA2/2333). Confirmation of Integrity and Purity of Antibody.