

36-3431: Anti-CD137L / 4-1BBL / TNFSF9 Monoclonal Antibody(Clone: CD137L/1547)

Clonality :	Monoclonal
Clone Name :	CD137L/1547
Application :	FACS,IHC
Reactivity :	Human
Gene :	TNFSF9
Gene ID :	8744
Uniprot ID :	P41273
Alternative Name :	4-1BB ligand; 4-1BBL; CD137L; ILA ligand (TNF related); Ly63l; Tumor necrosis factor ligand 5A (TNLG5A); Tumor necrosis factor ligand superfamily member 9 (TNFSF9)
Isotype :	Mouse IgG2a, kappa
Immunogen Information :	Recombinant full-length human CD137L protein

Description

TNFSF9 / 4-1BBL is a cytokine that belongs to the tumor necrosis factor (TNF) ligand family. This transmembrane cytokine is a bidirectional signal transducer that acts as a ligand for TNFRSF9 / 4-1BB, which is a costimulatory receptor molecule in T lymphocytes. This cytokine and its receptor are involved in the antigen presentation process and in the generation of cytotoxic T cells. The receptor TNFRSF9 / 4-1BB is absent from resting T lymphocytes but rapidly expressed upon antigenic stimulation. It has been shown to reactivate anergic T lymphocytes in addition to promoting T lymphocyte proliferation. This cytokine is required for the optimal CD8 responses in CD8 T cells. This cytokine is expressed in carcinoma cell lines, and is thought to be involved in T cell-tumor cell interaction.

Product Info

Amount :	20 µg / 100 µg
Content :	200 µg/ml of Ab Purified from Bioreactor Concentrate by Protein A/G. Prepared in 10mM PBS with 0.05% BSA & 0.05% azide. Also available WITHOUT BSA & azide at 1.0mg/ml.
Storage condition :	Antibody with azide - store at 2 to 8°C. Antibody without azide - store at -20 to -80°C. Antibody is stable for 24 months. Non-hazardous.

Application Note

Flow Cytometry (1-2ug/million cells in 0.1ml); Immunohistochemistry (Formalin-fixed) (1-2ug/ml for 30 minutes at RT)(Staining of formalin-fixed tissues requires heating tissue sections in 10mM Tris with 1mM EDTA, pH 9.0, for 45 min at 95°C followed by cooling at RT for 20 minutes)

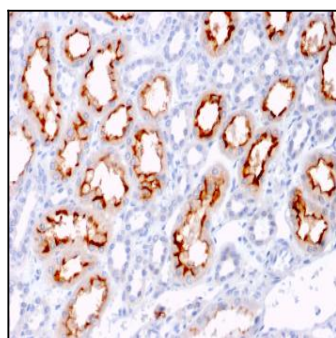


Fig. 1: Formalin-fixed, paraffin-embedded human Renal Cell Carcinoma stained with CD137L-Monospecific Mouse Monoclonal Antibody (CD137L/1547).

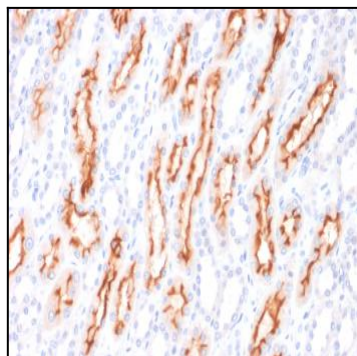


Fig. 2: Formalin-fixed, paraffin-embedded human Renal Cell Carcinoma stained with CD137L-Monospecific Mouse Monoclonal Antibody (CD137L/1547).

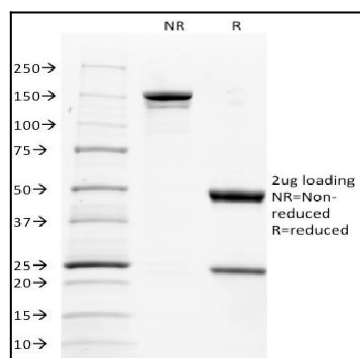


Fig. 3: SDS-PAGE Analysis Purified CD137L-Monospecific Mouse Monoclonal Antibody (CD137L/1547). Confirmation of Purity and Integrity of Antibody.

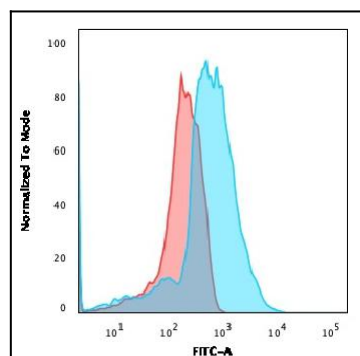


Fig. 4: Flow Cytometric Analysis of PFA-fixed HEK293 cells using CD137L-Monospecific Mouse Monoclonal Antibody (CD137L/1547) followed by goat anti-Mouse IgG-CF488 (Blue); Isotype Control (Red).