

36-3424: Anti-p63 (Squamous, Basal & Myoepithelial Cell Marker) Monoclonal Antibody(Clone: TP63/1786)

Clonality :	Monoclonal
Clone Name :	TP63/1786
Application :	ELISA,WB
Reactivity :	Human
Gene :	TP63
Gene ID :	8626
Uniprot ID :	Q9H3D4
Alternative Name :	Amplified in squamous cell carcinoma (AIS); Chronic ulcerative stomatitis protein (CUSP); EEC3; Keratinocyte transcription factor KET; LMS; NBP; p40; P51/P63; p53 like transcription factor; p53-related protein p63; RHS; SHFM4; TAp63alpha; TP53CP; TP53L; TP63; TP73; TP73L; Transformation-related protein 63; Trp53rp1; Trp6;3; Tumor protein 63; Tumor protein p53-like; tumor protein p73-like
Isotype :	Mouse IgG2b, kappa
Immunogen Information :	Recombinant fragment (around aa 3-106) of human p63 protein (exact sequence is proprietary)

Description

p63 is a homolog of the tumor suppressor p53. It is identified in basal cells in the epithelial layers of a variety of tissues, including epidermis, cervix, urothelium, breast and prostate. p63 was detected in nuclei of the basal epithelium in normal prostate glands; however, it was not expressed in malignant tumors of the prostate. As a result, p63 has been reported as a useful marker for differentiating benign from malignant lesions in the prostate, particularly when used in combination with markers of high molecular weight cytokeratins and the prostate-specific marker AMACR (P504S). p63 has also been shown to be a sensitive marker for lung squamous cell carcinomas (SqCC), with a sensitivity of ~90%. Specificity for lung SqCC, vs. lung adenocarcinoma (LADC), is approximately 80%. In breast tissue, p63 has been identified in myoepithelial cells of normal ducts.

Product Info

Amount :	20 µg / 100 µg
Content :	200 µg/ml of Ab Purified from Bioreactor Concentrate by Protein A/G. Prepared in 10mM PBS with 0.05% BSA & 0.05% azide. Also available WITHOUT BSA & azide at 1.0mg/ml.
Storage condition :	Antibody with azide - store at 2 to 8°C. Antibody without azide - store at -20 to -80°C. Antibody is stable for 24 months. Non-hazardous.

Application Note

ELISA (For coating, order Ab without BSA);Western Blot (1-2ug/ml);

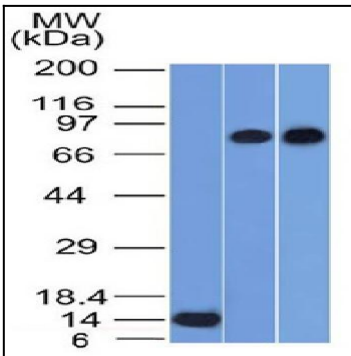


Fig. 1: Western Blot of Recombinant, PC3 and HeLa cell lysates using p63 Mouse Monoclonal Antibody (TP63/1786).

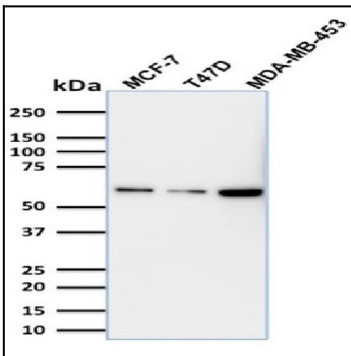


Fig. 2: Western Blot Analysis MCF-7; T47D and MDA-MB453 cell lysate using p63 Mouse Monoclonal Antibody (TP63/1786).

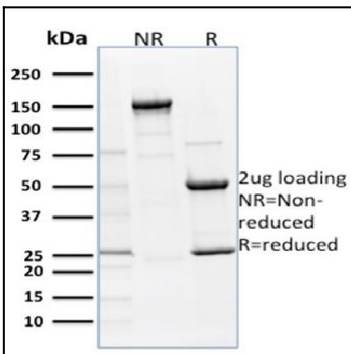


Fig. 3: SDS-PAGE Analysis Purified p63 Mouse Monoclonal Antibody (TP63/1786). Confirmation of Purity and Integrity of Antibody.

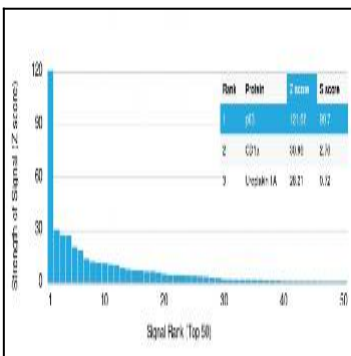


Fig. 4: Analysis of Protein Array containing >19,000 full-length human proteins using p63 Mouse Monoclonal Antibody (TP63/1786) Z- and S- Score: The Z-score represents the strength of a signal that a monoclonal antibody (MAb) (in combination with a fluorescently-tagged anti-IgG secondary antibody) produces when binding to a particular protein on the HuProt™ array. Z-scores are described in units of standard deviations (SD's) above the mean value of all signals generated on that array. If targets on HuProt™ are arranged in descending order of the Z-score, the S-score is the difference (also in units of SD's) between the Z-score. S-score therefore represents the relative target specificity of a MAb to its intended target. A MAb is considered to specific to its intended target, if the MAb has an S-score of at least 2.5. For example, if a MAb binds to protein X with a Z-score of 43 and to protein Y with a Z-score of 14, then the S-score for the binding of that MAb to protein X is equal to 29.