

36-3423: Anti-p63 (Squamous, Basal & Myoepithelial Cell Marker) Monoclonal Antibody(Clone: TP63/11)

Clonality :	Monoclonal
Clone Name :	TP63/11
Application :	IHC
Reactivity :	Human, Mouse
Gene :	TP63
Gene ID :	8626
Uniprot ID :	Q9H3D4
Alternative Name :	Amplified in squamous cell carcinoma (AIS); Chronic ulcerative stomatitis protein (CUSP); EEC3; Keratinocyte transcription factor KET; LMS; NBP; p40; P51/P63; p53 like transcription factor; p53-related protein p63; RHS; SHFM4; TAp63alpha; TP53CP; TP53L; TP63; TP73; TP73L; Transformation-related protein 63; Trp53rp1; Trp6;3; Tumor protein 63; Tumor protein p53-like; tumor protein p73-like
Isotype :	Mouse IgG2a, kappa
Immunogen Information :	Recombinant full-length human p63 protein

Description

p63 is a homolog of the tumor suppressor p53. It is identified in basal cells in the epithelial layers of a variety of tissues, including epidermis, cervix, urothelium, breast and prostate. p63 was detected in nuclei of the basal epithelium in normal prostate glands; however, it was not expressed in malignant tumors of the prostate. As a result, p63 has been reported as a useful marker for differentiating benign from malignant lesions in the prostate, particularly when used in combination with markers of high molecular weight cytokeratins and the prostate-specific marker AMACR (P504S). p63 has also been shown to be a sensitive marker for lung squamous cell carcinomas (SqCC), with a sensitivity of ~90%. Specificity for lung SqCC, vs. lung adenocarcinoma (LADC), is approximately 80%. In breast tissue, p63 has been identified in myoepithelial cells of normal ducts.

Product Info

Amount :	20 µg / 100 µg
Content :	200 µg/ml of Ab Purified from Bioreactor Concentrate by Protein A/G. Prepared in 10mM PBS with 0.05% BSA & 0.05% azide. Also available WITHOUT BSA & azide at 1.0mg/ml.
Storage condition :	Antibody with azide - store at 2 to 8°C. Antibody without azide - store at -20 to -80°C. Antibody is stable for 24 months. Non-hazardous.

Application Note

Immunohistochemistry (Formalin-fixed) (0.25-0.5ug/ml for 30 minutes at RT),(Staining of formalin-fixed tissues requires heating tissue sections in 10mM Tris with 1mM EDTA, pH 9.0, for 45 min at 95°C followed by cooling at RT for 20 minutes);

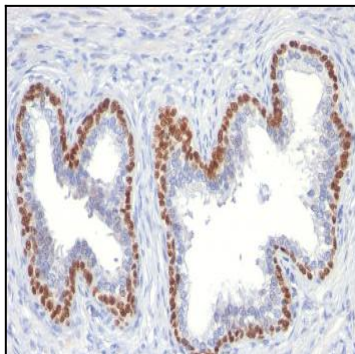


Fig. 1: Formalin-fixed, paraffin-embedded human Prostate Cancer stained with p63 Mouse Monoclonal Antibody (TP63/11).

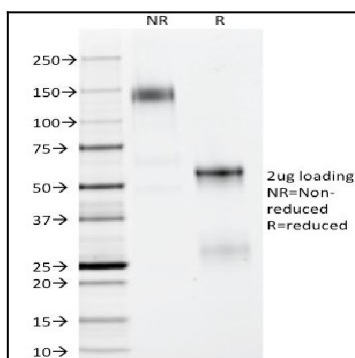


Fig. 2: SDS-PAGE Analysis Purified p63 Mouse Monoclonal Antibody (TP63/11). Confirmation of Purity and Integrity of Antibody.

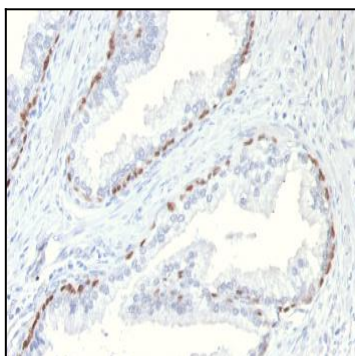


Fig. 3: Formalin-fixed, paraffin-embedded Mouse Prostate stained with p63 Mouse Monoclonal Antibody (TP63/11).