

## 36-3401: Anti-Caldesmon, HMW (h-Caldesmon) (Smooth Muscle Marker) Monoclonal Antibody(Clone: CALD1/1424R)

<b>Clonality :</b>	Monoclonal
<b>Clone Name :</b>	CALD1/1424R
<b>Application :</b>	WB,IHC
<b>Reactivity :</b>	Human, Rat
<b>Gene :</b>	CALD1
<b>Gene ID :</b>	800
<b>Uniprot ID :</b>	Q05682
<b>Alternative Name :</b>	CAD; CALD1; Caldesmon 1 Isoform 1; Caldesmon 1 Isoform 2; Caldesmon 1 Isoform 3; Caldesmon 1 Isoform 4; Caldesmon 1 Isoform 5; CDM; HCAD; LCAD; NAG22
<b>Isotype :</b>	Rabbit IgG
<b>Immunogen Information :</b>	Recombinant human full-length CALD1 protein

### Description

Recognizes a protein of 150kDa, which is identified as the high molecular weight variant of Caldesmon. Two closely related variants of human caldesmon have been identified which are different in their electrophoretic mobility and cellular distribution. The h-caldesmon variant (120'150kDa) is predominantly expressed in smooth muscle whereas l-caldesmon (70'80kDa) is found in non- muscle tissue and cells. Neither of the two variants has been detected in skeletal muscle. This MAbs recognizes only the 150kDa variant (h-caldesmon) in Western blots of human aortic media extracts and is unreactive with fibroblast extracts from cultivated human foreskin. Caldesmon is a developmentally regulated protein involved in smooth muscle and non-muscle contraction.

### Product Info

<b>Amount :</b>	20 µg / 100 µg
<b>Content :</b>	200 µg/ml of Ab Purified by Protein A/G. Prepared in 10mM PBS with 0.05% BSA & 0.05% azide. Also available WITHOUT BSA & azide at 1.0mg/ml.
<b>Storage condition :</b>	Antibody with azide - store at 2 to 8°C. Antibody without azide - store at -20 to -80°C. Antibody is stable for 24 months. Non-hazardous.

### Application Note

Western Blot (1-2ug/ml); ,Immunohistology (Formalin-fixed) (1-2ug/ml for 30 minutes at RT),(Staining of formalin-fixed tissues requires boiling tissue sections in 1mM EDTA, pH 7.5-8.5, for 10-20 min followed by cooling at RT for 20 minutes),

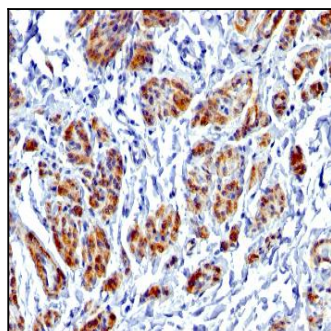


Fig. 1: Formalin-fixed, paraffin-embedded human Uterus stained with Caldesmon Rabbit Recombinant Monoclonal Antibody (CALD1/1424R).

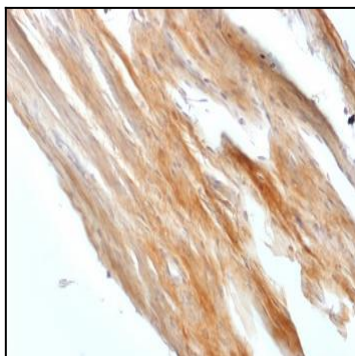


Fig. 2: Formalin-fixed, paraffin-embedded Rat Uterus stained with Caldesmon Rabbit Recombinant Monoclonal Antibody (CALD1/1424R).

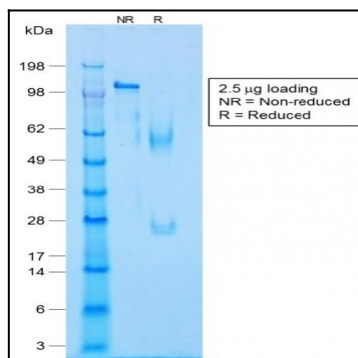


Fig. 3: SDS-PAGE Analysis Purified Caldesmon Rabbit Recombinant Monoclonal Antibody (CALD1/1424R). Confirmation of Integrity and Purity of Antibody.