

36-3396: Anti-Calretinin / Calbindin 2 (Mesothelioma Marker) Monoclonal Antibody(Clone: CALB2/2685)

Clonality :	Monoclonal
Clone Name :	CALB2/2685
Application :	IHC
Reactivity :	Human
Gene :	CALB2
Gene ID :	794
Uniprot ID :	P22676
Alternative Name :	29kDa calbindin; CAB29; CAL2; CALB2; Calbindin 2; Calbindin D29K; Calretinin; CR
Isotype :	Mouse IgG1, kappa
Immunogen Information :	Recombinant human Calretinin (Calbindin 2) protein fragment (around aa23-242) (exact sequence is proprietary)

Description

It recognizes a protein of about 29kDa, which is identified as Calretinin (also known as Calbindin 2). Calretinin is a vitamin D-dependent calcium-binding protein involved in calcium signaling. It is present in subsets of neurons throughout the brain and spinal chord, including sensory ganglia. Antibody to calretinin is useful in differentiating mesothelioma from adenocarcinomas of the lung. It also aids in differentiating adrenal cortical neoplasms from pheochromocytomas.

Product Info

Amount :	20 µg / 100 µg
Content :	200 µg/ml of Ab Purified from rabbit anti-serum by Protein A. Prepared in 10mM PBS with 0.05% BSA & 0.05% azide. Also available WITHOUT BSA at 1.0mg/ml.
Storage condition :	Antibody with azide - store at 2 to 8°C. Antibody without azide - store at -20 to -80°C. Antibody is stable for 24 months. Non-hazardous.

Application Note

Immunohistochemistry (Formalin-fixed) (1-2ug/ml for 30 minutes at RT)(Staining of formalin-fixed tissues requires heating tissue sections in 10mM Tris with 1mM EDTA, pH 9.0, for 45 min at 95°C followed by cooling at RT for 20 minutes);

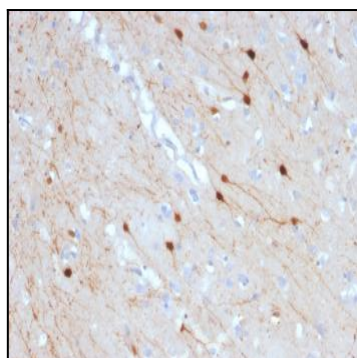


Fig. 1: Formalin-fixed, paraffin-embedded human Cerebellum stained with Calretinin Mouse Monoclonal Antibody (CALB2/2685).

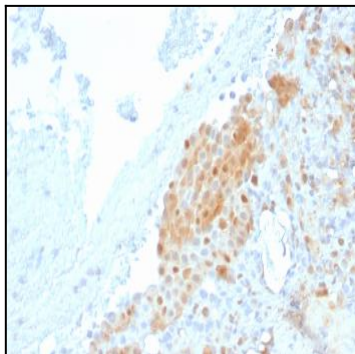


Fig. 2: Formalin-fixed, paraffin-embedded human Mesothelioma stained with Calretinin Mouse Monoclonal Antibody (CALB2/2685).

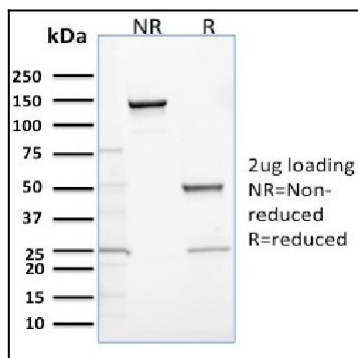


Fig. 3: SDS-PAGE Analysis Purified Calretinin Mouse Monoclonal Antibody (CALB2/2685). Confirmation of Purity and Integrity of Antibody.