

36-3377: Anti-Wilm's Tumor 1 (WT1) (Wilm's Tumor & Mesothelial Marker) Monoclonal Antibody(Clone: WT1/1434R)

Clonality :	Monoclonal
Clone Name :	WT1/1434R
Application :	IHC
Reactivity :	Human
Gene :	WT1
Gene ID :	7490
Uniprot ID :	P19544
Alternative Name :	WT1; AWT1; FWT1; GUD; NPHS4; WAGR; Wilms tumor 1
Isotype :	Rabbit IgG
Immunogen Information :	Recombinant human full-length WT1 protein

Description

Recognizes a 47-55kDa-tumor suppressor protein, identified as Wilm's Tumor (WT1) protein. The antibody reacts with all isoforms of the full-length WT1 and also identifies WT1 lacking exon 2-encoded amino acids, frequently found in subsets of sporadic Wilm's tumors. WT1, a sporadic and familial pediatric kidney tumor, is genetically heterogeneous. Wilm's tumor is associated with mutations of WT1, a zinc-finger transcription factor that is essential for the development of the metanephric kidney and the urogenital system. The WT1 gene is normally expressed in fetal kidney and mesothelium, and its expression has been suggested as a marker for Wilm's tumor and mesothelioma. WT1 protein has been identified in proliferative mesothelial cells, malignant mesothelioma, ovarian carcinoma, gonadoblastoma, nephroblastoma, and desmoplastic small round cell tumor. Lung adenocarcinomas rarely stain positive with this antibody. WT1 protein expression in mesothelial cells has become a reliable marker for the diagnosis of mesotheliomas.

Product Info

Amount :	20 µg / 100 µg
Content :	200 µg/ml of Ab Purified by Protein A/G. Prepared in 10mM PBS with 0.05% BSA & 0.05% azide. Also available WITHOUT BSA & azide at 1.0mg/ml.
Storage condition :	Antibody with azide - store at 2 to 8°C. Antibody without azide - store at -20 to -80°C. Antibody is stable for 24 months. Non-hazardous.

Application Note

Immunohistochemistry (Formalin-fixed) (1-2ug/ml for 30 minutes at RT),(Staining of formalin-fixed tissues requires heating tissue sections in 10mM Tris with 1mM EDTA, pH 9.0, for 45 min at 95 °C followed by cooling at RT for 20 minutes),

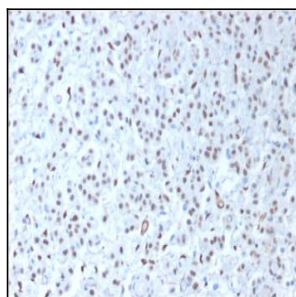


Fig. 1: Formalin-fixed, paraffin-embedded human Mesothelioma stained with Wilm's Tumor Rabbit Recombinant Monoclonal Antibody (WT1/1434R).

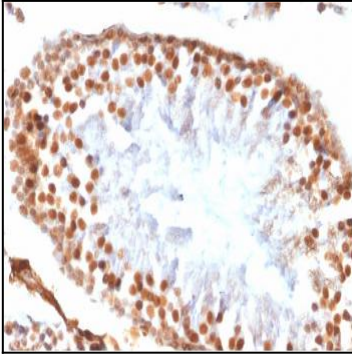


Fig. 2: Formalin-fixed, paraffin-embedded Rat Testis stained with Wilm's Tumor Rabbit Recombinant Monoclonal Antibody (WT1/1434R).

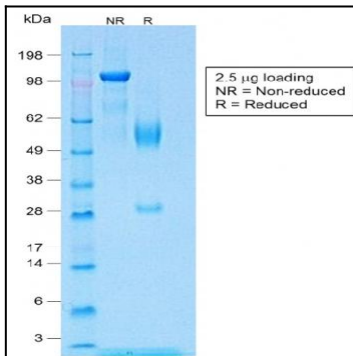


Fig. 3: SDS-PAGE Analysis of Purified Wilm's Tumor Rabbit Recombinant Monoclonal Antibody (WT1/1434R).