

36-3350: Anti-Vinculin (Marker of Age-related Macular Degeneration) Monoclonal Antibody(Clone: VCL/2572)

Clonality :	Monoclonal
Clone Name :	VCL/2572
Application :	WB,IHC
Reactivity :	Human
Gene :	VCL
Gene ID :	7414
Uniprot ID :	P18206
Alternative Name :	CMD1W; CMH15; Epididymis luminal protein 114; HEL114; Metavinculin; MV; MVCL; VCL; VINC
Isotype :	Mouse IgG1, kappa
Immunogen Information :	Recombinant fragment (around aa 174-322) of human Vinculin (VCL) protein (exact sequence is proprietary)

Description

Focal adhesions are identified as areas within the plasma membrane of tissue culture cells that adhere tightly to the underlying substrate. In vivo, these regions are involved in the adhesion of cells to the extracellular matrix. Paxillin and vinculin are cytoskeletal, focal adhesion proteins that are components of a protein complex which links the Actin network to the plasma membrane. Vinculin binding sites have been identified on other cytoskeletal proteins, including Talin and -Actinin has been shown to link Actin to integrins in the plasma membrane through interactions with the vinculin and Talin complex or by a direct interaction with integrin.

Product Info

Amount :	20 µg / 100 µg
Content :	200 µg/ml of Ab Purified from Bioreactor Concentrate by Protein A/G. Prepared in 10mM PBS with 0.05% BSA & 0.05% azide. Also available WITHOUT BSA & azide at 1.0mg/ml.
Storage condition :	Antibody with azide - store at 2 to 8°C. Antibody without azide - store at -20 to -80°C. Antibody is stable for 24 months. Non-hazardous.

Application Note

Western Blot (1-2ug/ml);Immunohistochemistry (Formalin-fixed) (1-2ug/ml for 30 minutes at RT)(Staining of formalin-fixed tissues requires heating tissue sections in 10mM Tris with 1mM EDTA, pH 9.0, for 45 min at 95°C followed by cooling at RT for 20 minutes);

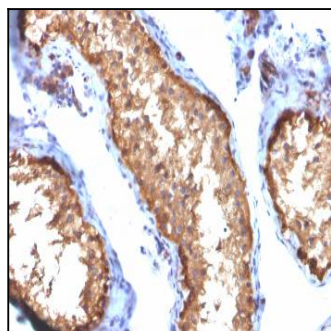


Fig. 1: Formalin-fixed, paraffin-embedded human Testis stained with VCL Mouse Monoclonal Antibody (VCL/2572).

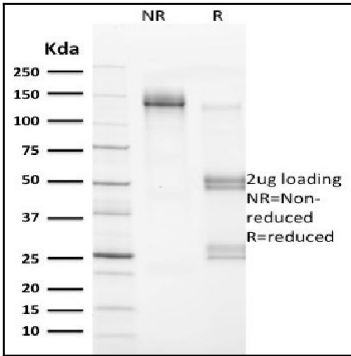


Fig. 2: SDS-PAGE Analysis Purified VCL Mouse Monoclonal Antibody (VCL/2572). Confirmation of Integrity and Purity of Antibody.

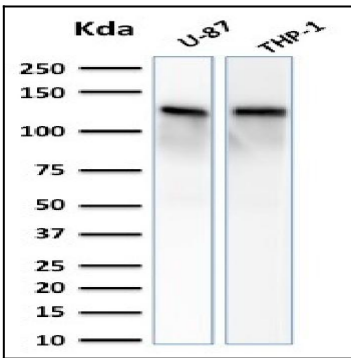


Fig. 3: Western Blot Analysis of U-87 and THP-1 cell lysate using VCL Mouse Monoclonal Antibody (VCL/2572).

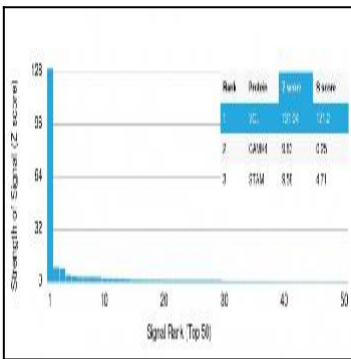


Fig. 4: Analysis of Protein Array containing more than 19,000 full-length human proteins using Vinculin Mouse Monoclonal Antibody (VCL/2572). Z- and S- Score: The Z-score represents the strength of a signal that a monoclonal antibody (MAb) (in combination with a fluorescently-tagged anti-IgG secondary antibody) produces when binding to a particular protein on the HuProt™ array. Z-scores are described in units of standard deviations (SD's) above the mean value of all signals generated on that array. If targets on HuProt™ are arranged in descending order of the Z-score, the S-score is the difference (also in units of SD's) between the Z-score. S-score therefore represents the relative target specificity of a MAb to its intended target. A MAb is considered to be specific to its intended target, if the MAb has an S-score of at least 2.5. For example, if a MAb binds to protein X with a Z-score of 43 and to protein Y with a Z-score of 14, then the S-score for the binding of that MAb to protein X is equal to 29.