

36-3317: Anti-TSH-Receptor, A-Chain (Thyroid Marker) Monoclonal Antibody(Clone: TSHRA/1402)

Clonality :	Monoclonal
Clone Name :	TSHRA/1402
Application :	ELISA,IHC
Reactivity :	Human
Gene :	TSHR
Gene ID :	7253
Uniprot ID :	P16473
Alternative Name :	CHNG1; hTSHRI; LGR3; Thyroid-stimulating hormone receptor; Thyrotropin receptor; Thyrotropin receptor I; TSHR
Isotype :	Mouse IgG1, kappa
Immunogen Information :	Recombinant human TSHR, A-Chain protein

Description

Thyroid-stimulating hormone (TSH, also known as thyrotropin) is a glycoprotein involved in the control of thyroid structure and metabolism, which stimulates the release of the thyroid hormones. TSH is regulated by thyroid hormone (T3) and various retinoid compounds. TSH binds to the thyroid-stimulating hormone receptor (TSHR), which is cleaved into two subunits, A and B, and plays a major role in regulating thyroid function. The third cytoplasmic loop of TSHR has been identified as critical for its role in regulating inositol phosphate and cAMP formation. In Graves disease, an autoimmune disorder, TSHR is activated by autoantibodies, which may be stimulated by the cleavage of the A and B subunits.

Product Info

Amount :	20 µg / 100 µg
Content :	200 µg/ml of Ab Purified from Bioreactor Concentrate by Protein A/G. Prepared in 10mM PBS with 0.05% BSA & 0.05% azide. Also available WITHOUT BSA & azide at 1.0mg/ml.
Storage condition :	Antibody with azide - store at 2 to 8°C. Antibody without azide - store at -20 to -80°C. Antibody is stable for 24 months. Non-hazardous.

Application Note

ELISA (Use Ab at 2-4ug/ml for coating) (Order Ab without BSA); Immunohistochemistry (Formalin-fixed) (1-2ug/ml for 30 minutes at RT)(Staining of formalin-fixed tissues requires heating tissue sections in 10mM Tris with 1mM EDTA, pH 9.0 for 45 min at 95°C followed by cooling at RT for 20 minutes);

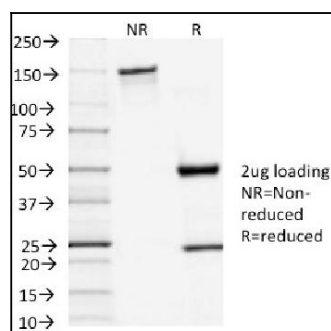


Fig. 1: SDS-PAGE Analysis Purified TSH-Receptor, A-Chain Mouse Monoclonal Antibody (TSHRA/1402). Confirmation of Purity and Integrity of Antibody.

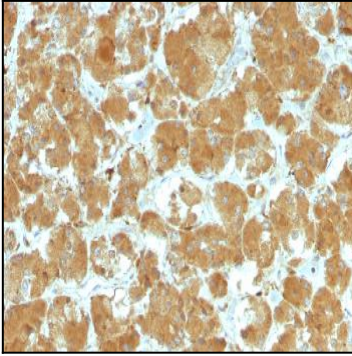


Fig. 2: Formalin-fixed, paraffin-embedded human Thyroid Carcinoma stained with TSHRA Mouse Monoclonal Antibody (TSHRA/1402).