

36-3270: Anti-CD282 (Toll-Like Receptor 2) Monoclonal Antibody(Clone: TLR2/221)

Clonality :	Monoclonal
Clone Name :	TLR2/221
Application :	Functional Assay
Reactivity :	Human
Gene :	TLR2
Gene ID :	7097
Uniprot ID :	O60603
Alternative Name :	CD282; Toll-like receptor 2 (TLR2); Toll/interleukin-1 receptor-like protein 4 (TIL4)
Isotype :	Mouse IgG2a, kappa
Immunogen Information :	Recombinant full-length human TLR2 protein.

Description

This MAbs reacts with human Toll-like receptor 2 (TLR2). It is a member of the Toll-like receptor (TLR) family, which plays a fundamental role in pathogen recognition and activation of innate immunity. TLRs are highly conserved from *Drosophila* to humans and share structural and functional similarities. They recognize pathogen-associated molecular patterns (PAMPs) that are expressed on infectious agents, and mediate the production of cytokines necessary for the development of effective immunity. The various TLRs exhibit different patterns of expression. This gene is expressed most abundantly in peripheral blood leukocytes, and mediates host response to Gram-positive bacteria and yeast via stimulation of NF-kappaB.

Product Info

Amount :	20 µg / 100 µg
Content :	200 µg/ml of Ab Purified from Bioreactor Concentrate by Protein A/G. Prepared in 10mM PBS with 0.05% BSA & 0.05% azide. Also available WITHOUT BSA & azide at 1.0mg/ml.
Storage condition :	Antibody with azide - store at 2 to 8°C. Antibody without azide - store at -20 to -80°C. Antibody is stable for 24 months. Non-hazardous.

Application Note

Functional Studies (Order Ab without Azide);

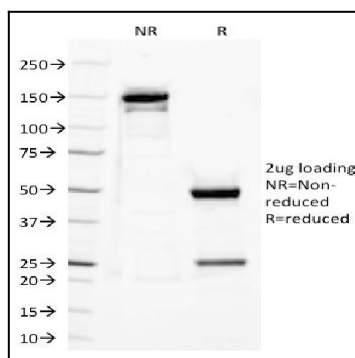


Fig. 1: SDS-PAGE Analysis Purified CD282 Mouse Monoclonal antibody (TLR2/221). Confirmation of Purity and Integrity of Antibody.