

36-3260: Anti-TIMP2 (Tissue Inhibitor of Metalloproteinase 2) Monoclonal Antibody(Clone: SPM356)

| | |
|--------------------------------|---|
| Clonality : | Monoclonal |
| Clone Name : | SPM356 |
| Application : | FACS,IF,WB,IHC |
| Reactivity : | Human, Mouse, Rat |
| Gene : | TIMP2 |
| Gene ID : | 7077 |
| Uniprot ID : | P16035 |
| Alternative Name : | Metalloproteinase inhibitor 2; TIMP metalloproteinase inhibitor 2; TIMP-2; TIMP2; Tissue Inhibitor of Metalloproteinase 2 |
| Isotype : | Mouse IgG2a, kappa |
| Immunogen Information : | A synthetic peptide from the N-terminus of human TIMP2 protein (aa56-66) (DSGNDIYGNPI) |

Description

It recognizes a protein of 21kDa, identified as tissue inhibitor of metalloproteinases-2 (TIMP-2). It is closely related to TIMP-1 and shows the highest binding affinity to both the latent (pro) and active forms of 72kDa Type IV collagenase (also known as MMP-2 or gelatinase A). It also has affinity for the active form of 92kDa Type IV collagenase (also known as MMP-9 or gelatinase B). TIMP-2 inhibits the proteolytic invasiveness of tumor cells and normal placental trophoblast cells.

Product Info

| | |
|----------------------------|---|
| Amount : | 20 µg / 100 µg |
| Content : | 200 µg/ml of Ab Purified from Bioreactor Concentrate by Protein A/G. Prepared in 10mM PBS with 0.05% BSA & 0.05% azide. Also available WITHOUT BSA & azide at 1.0mg/ml. |
| Storage condition : | Antibody with azide - store at 2 to 8°C. Antibody without azide - store at -20 to -80°C. Antibody is stable for 24 months. Non-hazardous. |

Application Note

Flow Cytometry (1-2ug/million cells); Immunofluorescence (1-2ug/ml); Western Blot (1-2ug/ml); Immunohistochemistry (Formalin-fixed) (1-2ug/ml for 30 minutes at RT)(Staining of formalin-fixed tissues requires heating tissue sections in 10mM Tris with 1mM EDTA, pH 9.0, for 45 min at 95°C followed by cooling at RT for 20 minutes);

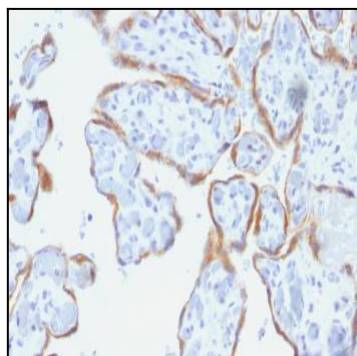


Fig. 1: Formalin-fixed, paraffin-embedded human Placenta stained with TIMP2 Monoclonal Antibody (SPM356).