

36-3222: Anti-Sulfotransferase family 1E, estrogen-preferring, member 1 Monoclonal Antibody(Clone: CPTC-SULT1E1-1)

Clonality :	Monoclonal
Clone Name :	CPTC-SULT1E1-1
Application :	WB,IHC
Reactivity :	Human
Gene :	SULT1E1
Gene ID :	6783
Uniprot ID :	P49888
Alternative Name :	EST; EST-1;EST1; Estrogen sulfotransferase; estrogen-preferring; estrone sulfotransferase; ST1E1; STE; Sulfotransferase 1E1; Sulfotransferase ; Sulfotransferase estrogen preferring
Isotype :	Mouse IgG2b, kappa
Immunogen Information :	Recombinant full-length human SULT1E1 protein

Description

The soluble sulfotransferases contribute to the elimination of xenobiotics, the activation of procarcinogens and the regulation of hormones by catalyzing the sulfate conjugation of these substances. SULT1E1, also known as STE, is a 294 amino acid member of the SULT1 family. Localized to the cytoplasm and expressed in intestine, liver and kidney, SULT1E1 exists as a homodimer that is thought to control estrogen receptor (ER) levels by sulfurylating free estradiol. Defects in the gene encoding SULT1E1 are associated with an increased risk for endometrial cancer, suggesting a role for SULT1E1 in tumorigenesis.

Product Info

Amount :	20 µg / 100 µg
Content :	200 µg/ml of Ab Purified from Bioreactor Concentrate by Protein A/G. Prepared in 10mM PBS with 0.05% BSA & 0.05% azide. Also available WITHOUT BSA & azide at 1.0mg/ml.
Storage condition :	Antibody with azide - store at 2 to 8°C. Antibody without azide - store at -20 to -80°C. Antibody is stable for 24 months. Non-hazardous.

Application Note

Western Blot (1-2ug/ml); Immunohistochemistry (Formalin-fixed) (1-2ug/ml for 30 min at RT)(Staining of formalin-fixed tissues requires heating tissue sections in 10mM Tris with 1mM EDTA, pH 9.0, for 45 min at 95°C followed by cooling at RT for 20 minutes);

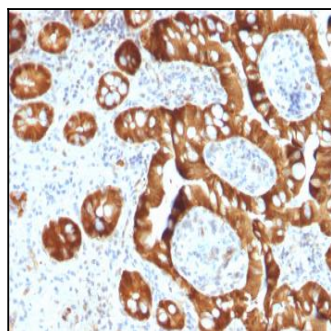


Fig. 1: Formalin-fixed, paraffin-embedded human Small Intestine stained with SULT1E1 Mouse Monoclonal Antibody (CPTC-SULT1E1-1).

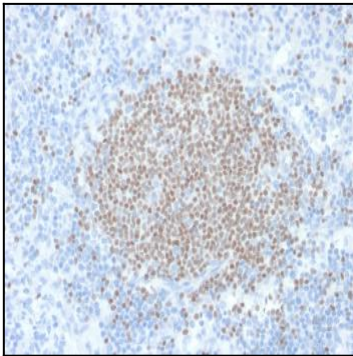


Fig. 2: Formalin-fixed, paraffin-embedded human Lymph Node stained with SULT1E1 Mouse Monoclonal Antibody (CPTC-SULT1E1-1).

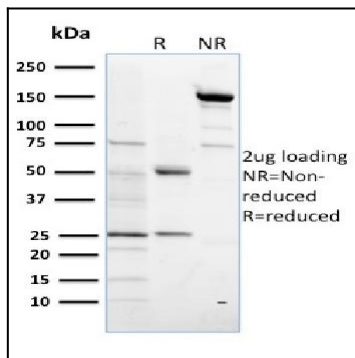


Fig. 3: SDS-PAGE Analysis Purified SULT1E1 Mouse Monoclonal Antibody (CPTC-SULT1E1-1). Confirmation of Purity and Integrity of Antibody.