

36-3198: Anti-Spectrin beta I (SPTB) Monoclonal Antibody(Clone: RG/26)

Clonality :	Monoclonal
Clone Name :	RG/26
Application :	ELISA,WB,IF,IHC
Reactivity :	Human
Gene :	SPTB
Gene ID :	6710
Uniprot ID :	O15020
Alternative Name :	beta-I spectrin; EL3; erythrocyte; HS2; SPTB1; HSPTB1; membrane cytoskeletal protein; spectrin beta (erythrocytic)
Isotype :	Mouse IgG2a, kappa
Immunogen Information :	Red cell membranes

Description

Spectrin is a cytoskeletal protein that lines the intracellular side of the plasma membrane of many cell types in pentagonal or hexagonal arrangements, forming a scaffolding and playing an important role in maintenance of plasma membrane integrity and cytoskeletal structure. In certain types of brain injury such as diffuse axonal injury, spectrin is irreversibly cleaved by the proteolytic enzyme calpain, destroying the cytoskeleton. Spectrin cleavage causes the membrane to form blebs and ultimately to be degraded, usually leading to cell death.

Product Info

Amount :	20 µg / 100 µg
Content :	200 µg/ml of Ab Purified from Bioreactor Concentrate by Protein A/G. Prepared in 10mM PBS with 0.05% BSA & 0.05% azide. Also available WITHOUT BSA & azide at 1.0mg/ml.
Storage condition :	Antibody with azide - store at 2 to 8°C. Antibody without azide - store at -20 to -80°C. Antibody is stable for 24 months. Non-hazardous.

Application Note

ELISA (Use Ab at 2-4ug/ml for coating) (Order Ab without BSA); Western Blot (1-2ug/ml); ,Immunofluorescence (1-2ug/ml); ,Immunohistochemistry (Formalin-fixed) (1-2ug/ml for 30 minutes at RT) ,(Staining of formalin-fixed tissues requires heating tissue sections in 10mM Tris with 1mM EDTA, pH 9.0, for 45 min at 95°C followed by cooling at RT for 20 minutes);

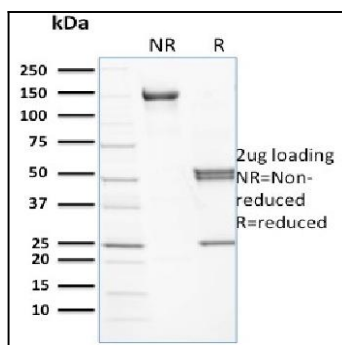


Fig. 1: SDS-PAGE Analysis Purified Spectrin beta III Mouse Monoclonal Antibody (RG/26). Confirmation of Purity and Integrity of Antibody.