

36-3194: Anti-Spectrin Alpha 1 (Erythrocyte Marker) Monoclonal Antibody(Clone: rSPTA1/1832)

Clonality :	Monoclonal
Clone Name :	rSPTA1/1832
Application :	WB,IHC
Reactivity :	Human
Gene :	SPTA1
Gene ID :	6708
Uniprot ID :	P02549
Alternative Name :	Alpha I spectrin; Elliptocytosis 2 (EL2); Erythrocyte alpha spectrin; Erythroid alpha-spectrin; HPP; HS3; Spectrin alpha erythrocytic 1; SPH3; SPTA1
Isotype :	Mouse IgG1, kappa
Immunogen Information :	Recombinant fragment of human SPTA (around aa356-475) (exact sequence is proprietary)

Description

Spectrin is an actin crosslinking and molecular scaffold protein that links the plasma membrane to the actin cytoskeleton, and functions in the determination of cell shape, arrangement of transmembrane proteins, and organization of organelles. Spectrins function as membrane organizers and stabilizers, composed of non-homologous) are present in other somatic cells. The spectrin tetramers in erythrocytes act as barriers to lateral diffusion, but spectrin dimers seem to lack this function.

Product Info

Amount :	20 µg / 100 µg
Content :	200 µg/ml of Ab Purified from Bioreactor Concentrate by Protein A/G. Prepared in 10mM PBS with 0.05% BSA & 0.05% azide. Also available WITHOUT BSA & azide at 1.0mg/ml.
Storage condition :	Antibody with azide - store at 2 to 8°C. Antibody without azide - store at -20 to -80°C. Antibody is stable for 24 months. Non-hazardous.

Application Note

Western Blot (1-2ug/ml);Immunohistochemistry (Formalin-fixed) (1-2ug/ml for 30 minutes at RT) (Staining of formalin-fixed tissues requires heating tissue sections in 10mM Tris with 1mM EDTA, pH 9.0, for 45 min at 95°C followed by cooling at RT for 20 minutes);

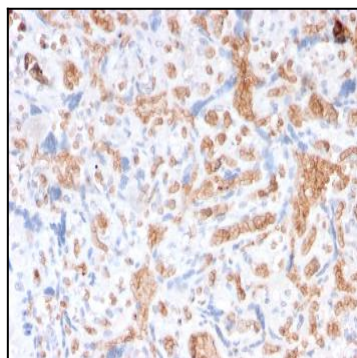


Fig. 1: Formalin-fixed, paraffin-embedded human Placenta stained with Spectrin alpha 1 Mouse Recombinant Monoclonal Antibody (rSPTA1/1832).

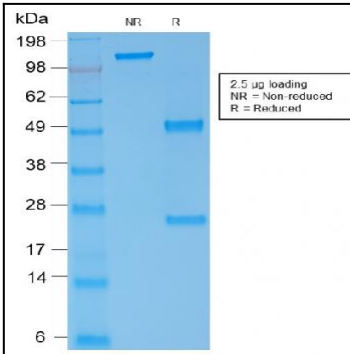


Fig. 2: SDS-PAGE Analysis Purified Spectrin alpha 1 Mouse Recombinant Monoclonal (rSPTA1/1832). Confirmation of Purity and Integrity of Antibody.

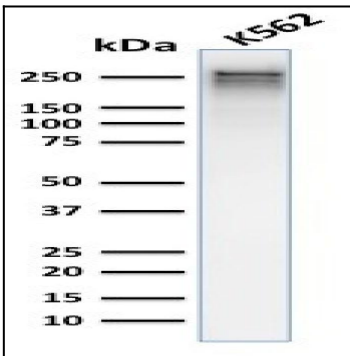


Fig. 3: Western Blot Analysis of human K562 cell lysate using Spectrin alpha 1 Mouse Recombinant Monoclonal Antibody (rSPTA1/1832).

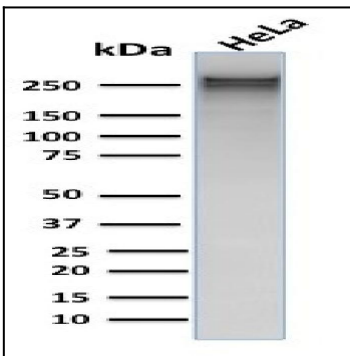


Fig. 4: Western Blot Analysis of human HeLa cell lysate using Spectrin alpha 1 Mouse Recombinant Monoclonal Antibody (rSPTA1/1832).

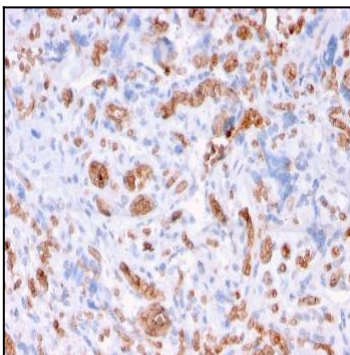


Fig. 5: Formalin-fixed, paraffin-embedded human Placenta stained with Spectrin alpha 1 Mouse Recombinant Monoclonal Antibody (rSPTA1/1832).