

36-3188: Anti-CD43 (T-Cell Marker) Monoclonal Antibody(Clone: SPN/3388)

Clonality :	Monoclonal
Clone Name :	SPN/3388
Application :	FACS,IF,WB,IHC
Reactivity :	Human
Gene :	SPN
Gene ID :	6693
Uniprot ID :	P16150
Alternative Name :	Galactoglycoprotein, GALGP, GPL115, Leukocyte sialoglycoprotein, Leukosialin, LSN, Sialophorin, SPN
Isotype :	Mouse IgG1, kappa
Immunogen Information :	Recombinant full-length human SPN protein

Description

It recognizes a cell surface glycoprotein of 95/115/135kDa (depending upon the extent of glycosylation), identified as CD43. 70-90% of T-cell lymphomas and from 22-37% of B-cell lymphomas express CD43. No reactivity has been observed with reactive B-cells. So a B-lineage population that co-expresses CD43 is highly likely to be a malignant lymphoma, especially a low-grade lymphoma, rather than a reactive B-cell population. When CD43 antibody is used in combination with anti-CD20, effective immunophenotyping of the lymphomas in formalin-fixed tissues can be obtained. Co-staining of a lymphoid infiltrate with anti-CD20 and anti-CD43 argues against a reactive process and favors a diagnosis of lymphoma.

Product Info

Amount :	20 µg / 100 µg
Content :	200 µg/ml of Ab Purified from Bioreactor Concentrate by Protein A/G. Prepared in 10mM PBS with 0.05% BSA & 0.05% azide. Also available WITHOUT BSA & azide at 1.0mg/ml.
Storage condition :	Antibody with azide - store at 2 to 8°C. Antibody without azide - store at -20 to -80°C. Antibody is stable for 24 months. Non-hazardous.

Application Note

Flow Cytometry (1-2ug/million cells); Immunofluorescence (1-2ug/ml); ,Western Blot (1-2ug/ml); ,Immunohistochemistry (Formalin-fixed) (1-2ug/ml for 30 minutes at RT),(Staining of formalin-fixed tissues requires heating tissue sections in 10mM Tris with 1mM EDTA, pH 9.0, for 45 min at 95°C followed by cooling at RT for 20 minutes);

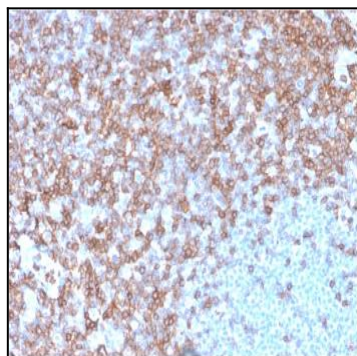


Fig. 1: Formalin-fixed, paraffin-embedded human spleen stained with CD43 Mouse Monoclonal Antibody (SPN/3388).

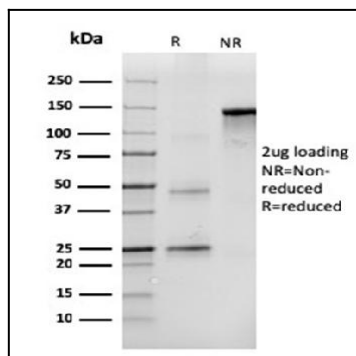


Fig. 2: SDS-PAGE Analysis Purified CD43 Mouse Monoclonal Antibody (SPN/3388). Confirmation of Integrity and Purity of Antibody

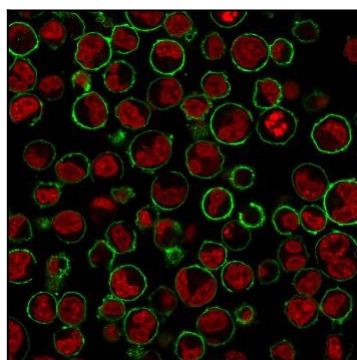


Fig. 3: Immunofluorescence Analysis of K562 CD43 Mouse Monoclonal Antibody (SPN/3388) followed by goat anti-Mouse IgG-CF488 (Green). The nuclear counterstain is NucSpot® Live 650.

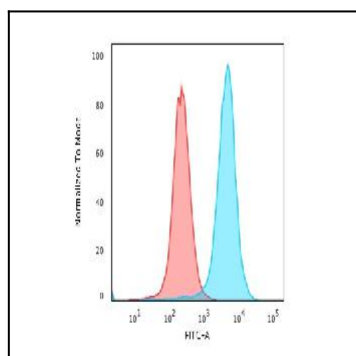


Fig. 4: Flow Cytometric Analysis of paraformaldehyde-fixed K562 cells using CD43 Mouse Monoclonal Antibody (SPN/3388) followed by goat anti-Mouse IgG-CF488 (Blue); Isotype Control (Red).