

36-3151: Anti-BMI1 (Oncogene and Stem Cell Marker) Monoclonal Antibody(Clone: BMI1/2690)

Clonality :	Monoclonal
Clone Name :	BMI1/2690
Application :	IHC
Reactivity :	Human
Gene :	BMI1
Gene ID :	648
Uniprot ID :	P35226
Alternative Name :	B lymphoma Mo MLV insertion region 1 homolog; BMI1; BMI1 polycomb ring finger oncogene; FLVI2/BMI1; Oncogene BMI1; PCGF4; Polycomb complex protein BMI-1; Polycomb group ring finger 4; RING finger protein 51; RNF51
Isotype :	Mouse IgG2a, kappa
Immunogen Information :	Recombinant fragment (around aa 142-326) of human BMI1 protein (exact sequence is proprietary)

Description

The B cell-specific moloney murine leukemia virus integration site 1 (Bmi-1) is a transcriptional receptor of the polycomb gene family involved in several cellular processes including cell-cycle regulation, apoptosis, and maintenance of adult and neoplastic stem cells by providing self-renewal capacity. Further, Bmi-1 expression has been associated with malignant transformation, tumor progression, metastatic disease, and poor prognosis in human malignancies.

Product Info

Amount :	20 µg / 100 µg
Content :	200 µg/ml of Ab Purified from Bioreactor Concentrate by Protein A/G. Prepared in 10mM PBS with 0.05% BSA & 0.05% azide. Also available WITHOUT BSA & azide at 1.0mg/ml.
Storage condition :	Antibody with azide - store at 2 to 8°C. Antibody without azide - store at -20 to -80°C. Antibody is stable for 24 months. Non-hazardous.

Application Note

Immunohistochemistry (Formalin-fixed) (1-2ug/ml for 30 minutes at RT)(Staining of formalin-fixed tissues requires heating tissue sections in 10mM Tris with 1mM EDTA, pH 9.0, for 45 min at 95°C followed by cooling at RT for 20 minutes);

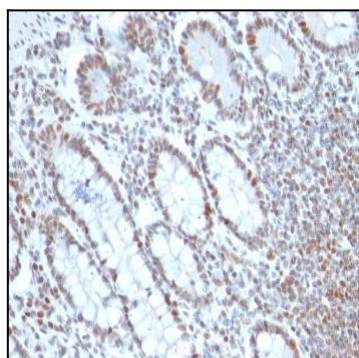


Fig. 1: Formalin-fixed, paraffin-embedded human Colon Carcinoma stained with BMI1 Mouse Monoclonal Antibody (BMI1/2690).

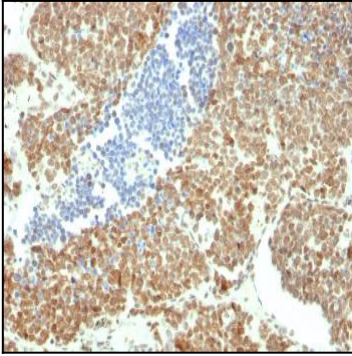


Fig. 2: Formalin-fixed, paraffin-embedded human Colon Carcinoma stained with BMI1 Mouse Monoclonal Antibody (BMI1/2690).

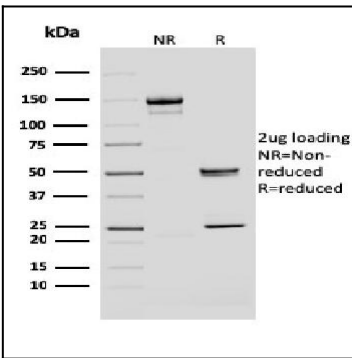


Fig. 3: SDS-PAGE Analysis Purified BMI1 Mouse Monoclonal Antibody (BMI1/2690). Confirmation of Purity and Integrity of Antibody.

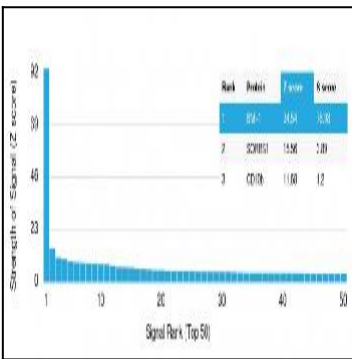


Fig. 4: Analysis of Protein Array containing more than 19,000 full-length human proteins using BMI1 Mouse Monoclonal Antibody (BMI1/2690)
 Z- and S- Score: The Z-score represents the strength of a signal that a monoclonal antibody (MAb) (in combination with a fluorescently-tagged anti-IgG secondary antibody) produces when binding to a particular protein on the HuProt™ array. Z-scores are described in units of standard deviations (SD's) above the mean value of all signals generated on that array. If targets on HuProt™ are arranged in descending order of the Z-score, the S-score is the difference (also in units of SD's) between the Z-score. S-score therefore represents the relative target specificity of a MAb to its intended target. A MAb is considered to specific to its intended target, if the MAb has an S-score of at least 2.5. For example, if a MAb binds to protein X with a Z-score of 43 and to protein Y with a Z-score of 14, then the S-score for the binding of that MAb to protein X is equal to 29.