

36-3123: Anti-S100A4 / Metastasin / Calvasculin (Marker of Tumor Metastasis) Monoclonal Antibody(Clone: S100A4/2750R)

Clonality :	Monoclonal
Clone Name :	S100A4/2750R
Application :	WB,FACS,IF,IHC
Reactivity :	Human, Mouse
Gene :	S100A4
Gene ID :	6275
Uniprot ID :	P26447
Alternative Name :	S100A4; S100 calcium-binding protein A4; Calvasculin; CAPL; Fibroblast specific protein 1 (FSP1); Leukemia multidrÀµg resistance associated protein; Malignant transformation suppression 1 (MTS1); Metastasin; Placental calcium-binding protein
Isotype :	Rabbit IgG
Immunogen Information :	Recombinant fragment of human S100A4 protein (around aa1-200) (exact sequence is proprietary)

Description

S100A4 belongs to the S100 super-family of proteins containing 2 EF-hand calcium-binding domains. S100 genes include at least 25 members, including S100A1-S100A18, trichohyalin, filaggrin, repetin, S100P, and S100Z. S100A4 exerts its function via direct interaction with a number of proteins including P53, P63, non-muscle myosin IIA, 64 integrin, and liprin b1. S100A4 is overexpressed in highly metastatic cancers, which makes it useful as a marker of tumor progression.

Product Info

Amount :	20 µg / 100 µg
Content :	200 µg/ml of Ab Purified from Bioreactor Concentrate by Protein A/G. Prepared in 10mM PBS with 0.05% BSA & 0.05% azide. Also available WITHOUT BSA & azide at 1.0mg/ml.
Storage condition :	Antibody with azide - store at 2 to 8°C. Antibody without azide - store at -20 to -80°C. Antibody is stable for 24 months. Non-hazardous.

Application Note

Western Blot (1-2ug/ml); Flow Cytometry (1-2ug/million cells); Immunofluorescence (1-2ug/ml); Immunohistochemistry (Formalin-fixed) (1-2ug/ml for 30 minutes at RT),(Staining of formalin-fixed tissues requires heating tissue sections in 10mM Tris with 1mM EDTA, pH 9.0, for 45 min at 95°C followed by cooling at RT for 20 minutes);

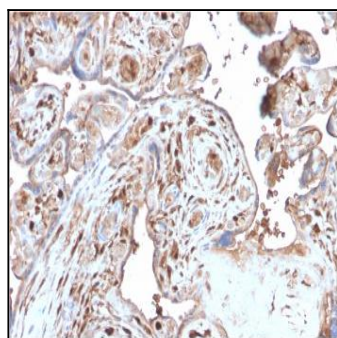


Fig. 1: Formalin-fixed, paraffin-embedded human Placenta stained with S100A4 Recombinant Rabbit Monoclonal Antibody (S100A4/2750R).

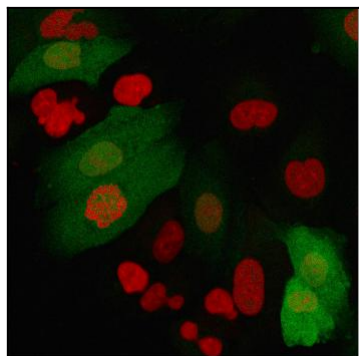


Fig. 2: Immunofluorescence staining of A549 cells using S100A4 Recombinant Rabbit Monoclonal Antibody (S100A4/2750R) followed by goat anti-Mouse IgG conjugated to CF488 (green). Nuclei are stained with Reddot.

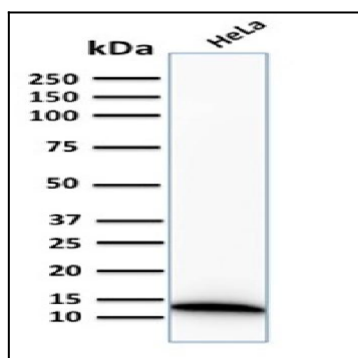


Fig. 3: Western Blot Analysis of human HeLa cell lysate using S100A4 Recombinant Rabbit Monoclonal Antibody (S100A4/2750R).

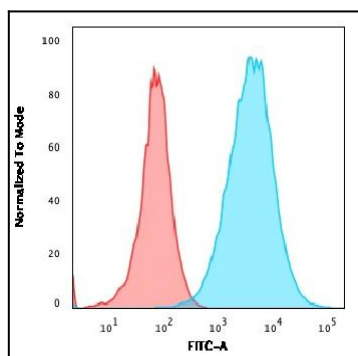


Fig. 4: Flow Cytometric Analysis of A549 cells using S100A4 Recombinant Rabbit Monoclonal Antibody (S100A4/2750R) followed by goat anti-rabbit IgG-CF488 (Blue); Isotype Control (Red).

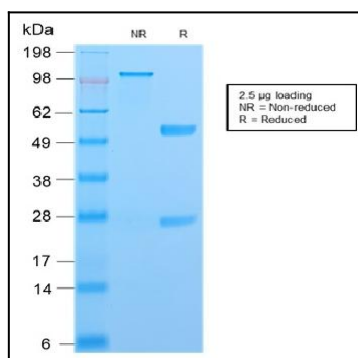


Fig. 5: SDS-PAGE Analysis Purified S100A4 Recombinant Rabbit Monoclonal Antibody (S100A4/2750R). Confirmation of Purity and Integrity of Antibody.