

## 36-3100: Anti-Bcl-X (Apoptosis Marker) Monoclonal Antibody(Clone: SPM519)

|                                |   |
|--------------------------------|---|
| <b>Clonality :</b>             | Monoclonal  |
| <b>Clone Name :</b>            | SPM519  |
| <b>Application :</b>           | IHC   |
| <b>Reactivity :</b>            | Human   |
| <b>Gene :</b>                  | BCL2L1  |
| <b>Gene ID :</b>               | 598   |
| <b>Uniprot ID :</b>            | Q07817  |
| <b>Alternative Name :</b>      | Apoptosis regulator Bcl-X, B cell lymphoma 2 like, BCL XL/S, Bcl-2-like protein 1, Bcl2-L-1, BCL2L, Bcl2l1, BCLX, BclXL, BclXs, Protein phosphatase 1 regulatory subunit 52 (PPP1R52) |
| <b>Isotype :</b>               | Mouse IgG   |
| <b>Immunogen Information :</b> | Recombinant human BCL2L1 protein fragment (around aa 1-135) (exact sequence is proprietary)   |

### Description

Recognizes a protein of 27kDa, identified as the Bcl-X protein. This MAb shows no cross-reaction with Bcl-2 or Bax protein. Bcl-X has two isoforms, Bcl-XL (long), a 241 amino acid protein which suppresses cell death. And Bcl-XS (short), a 178 amino acid protein lacking a 63 amino acid domain which functions as a dominant inhibitor of Bcl-2.

### Product Info

|                            |   |
|----------------------------|---|
| <b>Amount :</b>            | 20 µg / 100 µg  |
| <b>Content :</b>           | 200 µg/ml of Ab Purified from Bioreactor Concentrate by Protein A/G. Prepared in 10mM PBS with 0.05% BSA & 0.05% azide. Also available WITHOUT BSA & azide at 1.0mg/ml. |
| <b>Storage condition :</b> | Antibody with azide - store at 2 to 8°C. Antibody without azide - store at -20 to -80°C. Antibody is stable for 24 months. Non-hazardous.                               |

### Application Note

Immunohistochemistry (Formalin-fixed) (1-2ug/ml for 30 minutes at RT) (Staining of formalin-fixed tissues requires heating tissue sections in 10mM Tris with 1mM EDTA, pH 9.0, for 45 min at 95&degC followed by cooling at RT for 20 minutes);

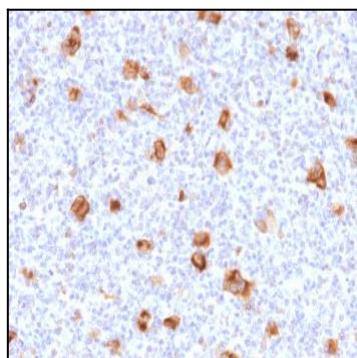


Fig. 1: Formalin-fixed, paraffin-embedded Hodgkin's lymphoma stained with Bcl-x Mouse Monoclonal Antibody (SPM519).

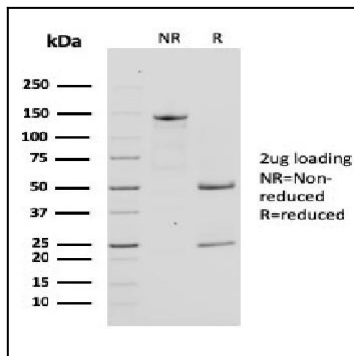


Fig. 2: SDS-PAGE Analysis Purified Bcl-x Mouse Monoclonal Antibody (SPM519). Confirmation of Purity and Integrity of Antibody.