

36-3087: Anti-Cyclin D1 (G1-Cyclin & Mantle Cell Marker) Monoclonal Antibody(Clone: DCS-6)

Clonality :	Monoclonal
Clone Name :	DCS-6
Application :	FACS,IF,WB,IHC
Reactivity :	Human, Mouse, Rat
Gene :	CCND1
Gene ID :	595
Uniprot ID :	P24385
Alternative Name :	B cell CLL/lymphoma 1, B cell leukemia 1, B-cell lymphoma 1 protein, BCL-1 oncogene, CCND1 protein, CCND1/FSTL3 fusion gene, CCND1/IGHG1 fusion gene CCND1/IGLC1 fusion gene, CCND1/PTH fusion gene, cD1, Cyl 1, G1/S-specific cyclin-D1, Parathyroid adenomatosis 1, PRAD1 oncogene
Isotype :	Mouse IgG2a, kappa
Immunogen Information :	Human full length recombinant cyclin D1 protein

Description

Recognizes a protein of 36kDa, identified as cyclin D1. Cyclin D1, one of the key cell cycle regulators, is a putative proto-oncogene overexpressed in a wide variety of human neoplasms. This antibody neutralizes the activity of cyclin D1 in vivo. About 60% of mantle cell lymphomas (MCL) contain a t(11; 14)(q13; q32) translocation resulting in over-expression of cyclin D1. This antibody is useful in identifying mantle cell lymphomas (cyclin D1 positive) from CLL/SLL and follicular lymphomas (cyclin D1 negative). About 40% of breast carcinomas are positive for Cyclin D1. Occasionally, hairy cell leukemia and plasma cell myeloma weakly express Cyclin D1.

Product Info

Amount :	20 µg / 100 µg
Content :	200 µg/ml of Ab Purified from Bioreactor Concentrate by Protein A/G. Prepared in 10mM PBS with 0.05% BSA & 0.05% azide. Also available WITHOUT BSA & azide at 1.0mg/ml.
Storage condition :	Antibody with azide - store at 2 to 8°C. Antibody without azide - store at -20 to -80°C. Antibody is stable for 24 months. Non-hazardous.

Application Note

Flow Cytometry (1-2ug/million cells); Immunofluorescence (1-2ug/ml); Western Blot (1-2ug/ml); Immunohistochemistry (Formalin-fixed) (1-2ug/ml for 30 minutes at RT)(Staining of formalin-fixed tissues requires heating tissue sections in 10mM Tris with 1mM EDTA, pH 9.0, for 45 min at 95°C followed by cooling at RT for 20 minutes);

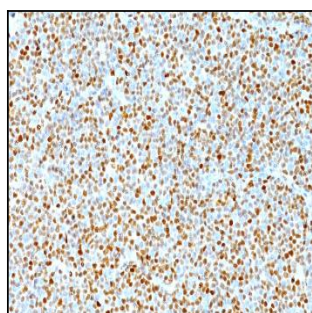


Fig. 1: Formalin-fixed, paraffin-embedded human Mantle Cell Lymphoma stained with Cyclin D1 Mouse Monoclonal Antibody (DCS-6).

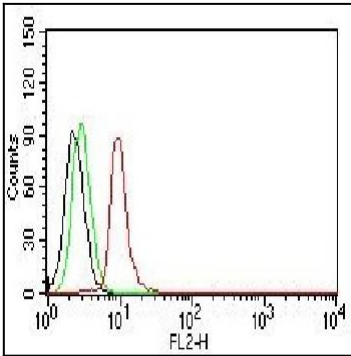


Fig. 2: Flow Cytometry of human Cyclin D1 on Jurkat cells. Black: cells alone; Green: Isotype Control; Red: PE-labeled Cyclin D1 Mouse Monoclonal Antibody (DCS-6).

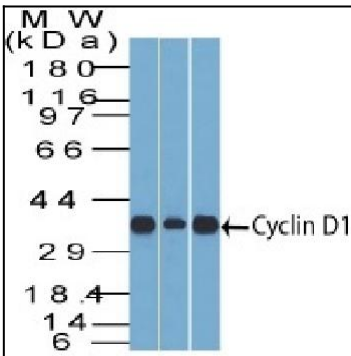


Fig. 3: Western Blot Analysis of Cyclin D1 (1) C2C12, (2) HepG2, & (3) NIH3T3 cell lysate Cyclin D1 Mouse Monoclonal Antibody (DCS-6).

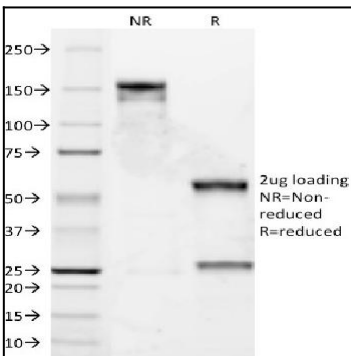


Fig. 4: SDS-PAGE Analysis Purified Cyclin D1 Mouse Monoclonal Antibody (DCS-6). Confirmation of Integrity and Purity of Antibody.