

36-3086: Anti-Retinol Binding Protein-1 (RBP1) Monoclonal Antibody(Clone: rRBP1/872)

Clonality :	Monoclonal
Clone Name :	rRBP1/872
Application :	IHC
Reactivity :	Human, Rat, Mouse
Gene :	RBP
Gene ID :	5947; 5948; 5950
Uniprot ID :	P02753; P09455; P50120
Alternative Name :	Cellular retinol-binding protein I, CRBP1, CRBP2, RBP1, RBP2, RBP4, RBPC, Retinol binding protein 1, Retinol binding protein 1 cellular, Retinol binding protein 2 cellular, Retinol binding protein 4 plasma
Isotype :	Mouse IgG1, kappa
Immunogen Information :	Recombinant full-length human RBP protein

Description

This MA b recognizes an epitope within the 74-182 C-terminal sequence (11kD peptide fragment) of human serum Cellular Retinol Binding Protein 1 (CRBP 1), a single-chain glycoprotein belonging to the superfamily of hydrophobic molecule transporter proteins, which is responsible for transport of retinol (vitamin A1) from the liver to peripheral target tissues, like the eye, where it mediates the cellular uptake. CRBP 1 is synthesized by hepatic parenchymal cells where it becomes bound to its ligand retinol and is then released into the circulation, where it binds further to the protein transthyretin, to form a transporting complex, which is big enoÅµgh not to be lost by filtration throÅµgh the kidney glomeruli. It is detected in nearly all tissues with higher expression in adult ovary, pancreas, pituitary gland, adrenal gland, and fetal liver.

Product Info

Amount :	20 µg / 100 µg
Content :	200 µg/ml of Ab Purified from Bioreactor Concentrate by Protein A/G. Prepared in 10mM PBS with 0.05% BSA & 0.05% azide. Also available WITHOUT BSA & azide at 1.0mg/ml.
Storage condition :	Antibody with azide - store at 2 to 8°C. Antibody without azide - store at -20 to -80°C. Antibody is stable for 24 months. Non-hazardous.

Application Note

Immunohistochemistry (Formalin-fixed) (1-2ug/ml for 30 minutes at RT),(Staining of formalin-fixed tissues requires heating tissue sections in 10mM Tris with 1mM EDTA, pH 9.0, for 45 min at 95°C followed by cooling at RT for 20 minutes);

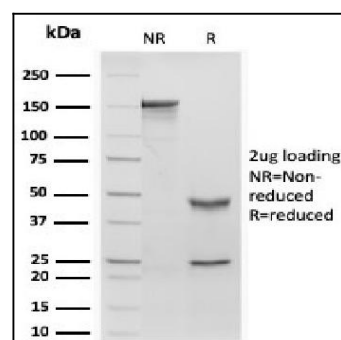


Fig. 1: SDS-PAGE Analysis Purified RBP1 Recombinant Mouse Monoclonal Antibody (rRBP1/872). Confirmation of Purity and Integrity of Antibody.

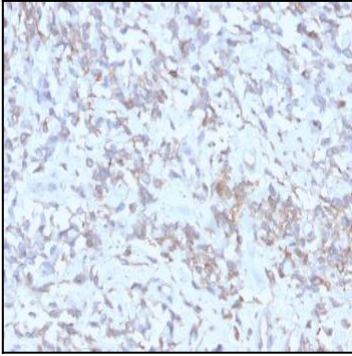


Fig. 2: Formalin-fixed, paraffin-embedded human Hepatocellular Carcinoma stained with RBP1 Recombinant Mouse Monoclonal Antibody (rRBP1/872).