

## 36-3077: Anti-CD45RB (B-Cell Marker) Monoclonal Antibody(Clone: PTPRC/2877R)

<b>Clonality :</b>	Monoclonal
<b>Clone Name :</b>	PTPRC/2877R
<b>Application :</b>	FACS,IF,WB,IHC
<b>Reactivity :</b>	Human
<b>Gene :</b>	PTPRC
<b>Gene ID :</b>	5788
<b>Uniprot ID :</b>	P08575
<b>Alternative Name :</b>	B220, CD45R, GP180, Leukocyte common antigen (LCA), Loc, Ly-5, Lyt-4, Protein tyrosine phosphatase receptor type C (PTPRC), Receptor-type tyrosine-protein phosphatase C, T200 glycoprotein
<b>Isotype :</b>	Rabbit IgG
<b>Immunogen Information :</b>	Recombinant human full-length CD45RB protein

### Description

CD45R, also designated CD45 and PTPRC, has been identified as a transmembrane glycoprotein, broadly expressed among hematopoietic cells. Multiple isoforms of CD45R are distributed throughout the immune system according to cell type. These isoforms arise because of alternative splicing of exons 4, 5, and 6. The corresponding protein domains are characterized by the binding of monoclonal antibodies specific for CD45RA (exon 4), CD45RB (exon 5), CD45RC (exon 6) and CD45RO (exons 4 to 6 spliced out). The variation in these isoforms is localized to the extracellular domain of CD45R, while the intracellular domain is conserved. CD45RB is expressed on mature B-lymphocytes and the majority of lymphomas and leukemias of B-cell origin.

### Product Info

<b>Amount :</b>	20 µg / 100 µg
<b>Content :</b>	200 µg/ml of Ab Purified from Bioreactor Concentrate by Protein A/G. Prepared in 10mM PBS with 0.05% BSA & 0.05% azide. Also available WITHOUT BSA & azide at 1.0mg/ml.
<b>Storage condition :</b>	Antibody with azide - store at 2 to 8°C. Antibody without azide - store at -20 to -80°C. Antibody is stable for 24 months. Non-hazardous.

### Application Note

Flow Cytometry (1-2ug/million cells); Immunofluorescence (1-2ug/ml); ,Western Blot (1-2ug/ml); ,Immunohistochemistry (Formalin-fixed) (1-2ug/ml for 30 minutes at RT),(Staining of formalin-fixed tissues requires heating tissue sections in 10mM Tris with 1mM EDTA, pH 9.0, for 45 min at 95&degC followed by cooling at RT for 20 minutes);

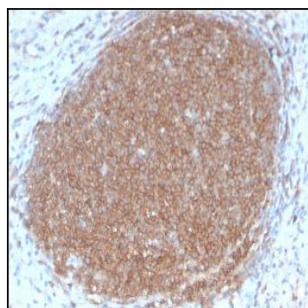


Fig. 1: Formalin-fixed, paraffin-embedded human Lymph Node stained with CD45RB Rabbit Recombinant Monoclonal Antibody (PTPRC/2877R).

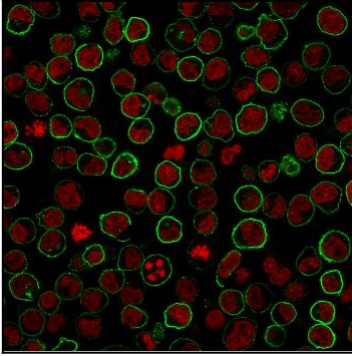


Fig. 2: Paraformaldehyde-fixed Raji cells stained with CD45RB Rabbit Recombinant Monoclonal Antibody (PTPRC/2877R) followed by Goat anti-rabbit IgG-CF488 (Green). Counterstain is Phalloidin (red).

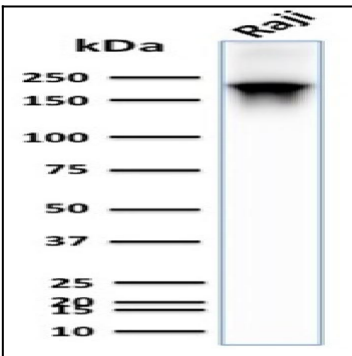


Fig. 3: Western Blot Analysis of human Raji cell lysate using CD45RB Rabbit Recombinant Monoclonal Antibody (PTPRC/2877R).

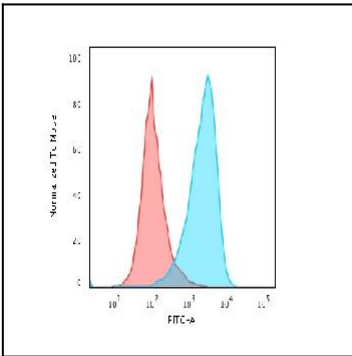


Fig. 4: Flow Cytometric Analysis of paraformaldehyde-fixed Raji cells using CD45RB Rabbit Recombinant Monoclonal Antibody (PTPRC/2877R) followed by Goat anti-rabbit IgG-CF488 (Blue); Isotype Control (Red).

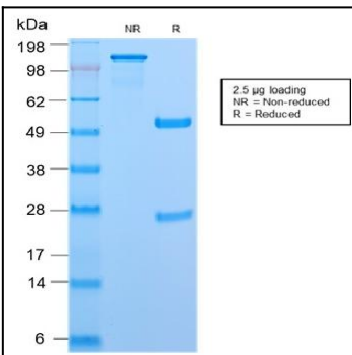


Fig. 5: SDS-PAGE Analysis Purified CD45RB Rabbit Recombinant Monoclonal Antibody (PTPRC/2877R). Confirmation of Purity and Integrity of Antibody.

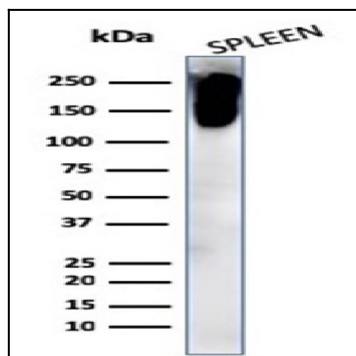


Fig. 6: Western Blot Analysis of human spleen cell lysate using CD45RB Rabbit Recombinant Monoclonal Antibody (PTPRC/2877R).