

36-3070: Anti-CD45 / LCA (Leucocyte Marker) Monoclonal Antibody(Clone: 2B11 + PD7/26)-FITC

Clonality :	Monoclonal
Clone Name :	2B11 + PD7/26
Application :	FACS,IF,IHC
Reactivity :	Human
Conjugate :	FITC
Gene :	PTPRC
Gene ID :	5788
Uniprot ID :	P08575
Alternative Name :	B220, CD45R, GP180, Leukocyte common antigen (LCA), Loc, Ly-5, Lyt-4, Protein tyrosine phosphatase receptor type C (PTPRC), Receptor-type tyrosine-protein phosphatase C, T200 glycoprotein
Isotype :	Mouse IgG1, kappa + Mouse IgG1, kappa
Immunogen Information :	Isolated neoplastic cells from T cell lymphoma (2B11); and human peripheral blood lymphocytes maintained in T cell growth factor (PD7/26)

Description

Recognizes the CD45 leukocyte common antigen (LCA) family which is comprised of at least four isoforms of membrane glycoproteins (220, 205, 190, 180kDa) expressed on hematopoietic cell lines but absent on non-hematopoietic cell lines, normal and malignant non-hematopoietic tissues. The intracellular portions of these molecules have protein phosphatase activity and are involved in regulation of transmembrane signals. Antibody to CD45 is useful in differential diagnosis of lymphoid tumors from non-hematopoietic undifferentiated neoplasms. A positive result with this MAb is highly indicative of lymphoid or myeloid origin. Certain types of lymphoid neoplasms may lack CD45 (Hodgkin lymphoma, some T-cell lymphomas, and some leukemias) so its absence does not rule out a hematolymphoid tumor. This antibody is expressed almost exclusively by cells of hematopoietic lineage and is present in most benign and malignant lymphocytes as well as plasma cell precursors.

Product Info

Amount :	0.5 ml at 100µg/ml
Content :	Antibody Purified from Bioreactor Concentrate by Protein A/G and conjugated to various reporter molecules. Prepared in 10mM PBS with 0.05% BSA and 0.05% azide. Contact us if you require this Ab in a different format.
Storage condition :	Antibody with azide - store at 4 to 8°C. Antibody is stable for 24 months. Non-hazardous.

Application Note

Flow Cytometry (1-2ug/million cells); Immunofluorescence (1-2ug/ml); Immunohistochemistry (Formalin-fixed) (1-2ug/ml for 30 minutes at RT)(Staining of formalin-fixed tissues requires heating tissue sections in 10mM Tris with 1mM EDTA, pH 9.0, for 45 min at 95°C followed by cooling at RT for 20 minutes);

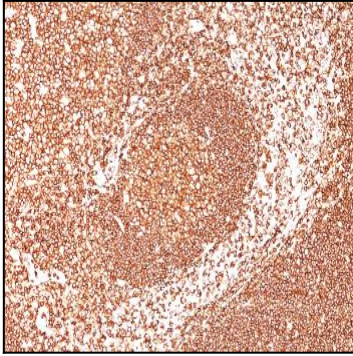


Fig. 1: Formalin-fixed, paraffin-embedded human Tonsil stained with CD45 Mouse Monoclonal Antibody (2B11+PD7/26).

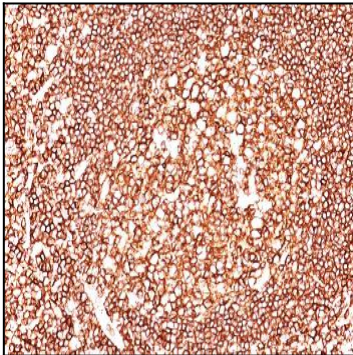


Fig. 2: Formalin-fixed, paraffin-embedded human Tonsil stained with CD45 Mouse Monoclonal Antibody (2B11+PD7/26).