

36-3068: Anti-CD45 / LCA (B-Cell Marker) Monoclonal Antibody(Clone: rPTPRC/1460)

Clonality :	Monoclonal
Clone Name :	rPTPRC/1460
Application :	FACS,IF,WB,IHC
Reactivity :	Human
Gene :	PTPRC
Gene ID :	5788
Uniprot ID :	P08575
Alternative Name :	B220, CD45R, GP180, Leukocyte common antigen (LCA), Loc, Ly-5, Lyt-4, Protein tyrosine phosphatase receptor type C (PTPRC), Receptor-type tyrosine-protein phosphatase C, T200 glycoprotein
Isotype :	Mouse IgG1, kappa
Immunogen Information :	Human recombinant full-length CD45 protein

Description

CD45R, also designated CD45 and PTPRC, has been identified as a transmembrane glycoprotein, broadly expressed among hematopoietic cells. Multiple isoforms of CD45R are distributed throughout the immune system according to cell type. These isoforms arise because of alternative splicing of exons 4, 5, and 6. The corresponding protein domains are characterized by the binding of monoclonal antibodies specific for CD45RA (exon 4), CD45RB (exon 5), CD45RC (exon 6) and CD45RO (exons 4 to 6 spliced out). The variation in these isoforms is localized to the extracellular domain of CD45R, while the intracellular domain is conserved. CD45R functions as a phosphor-tyrosine phosphatase. Antibody to CD45 is useful in differential diagnosis of lymphoid tumors from non-hematopoietic undifferentiated neoplasms.

Product Info

Amount :	20 µg / 100 µg
Content :	200 µg/ml of Ab Purified from Bioreactor Concentrate by Protein A/G. Prepared in 10mM PBS with 0.05% BSA & 0.05% azide. Also available WITHOUT BSA & azide at 1.0mg/ml.
Storage condition :	Antibody with azide - store at 2 to 8°C. Antibody without azide - store at -20 to -80°C. Antibody is stable for 24 months. Non-hazardous.

Application Note

Flow Cytometry (1-2ug/million cells); Immunofluorescence (1-2ug/ml); Western Blot (1-2ug/ml); Immunohistochemistry (Formalin-fixed) (1-2ug/ml for 30 minutes at RT),(Staining of formalin-fixed tissues requires heating tissue sections in 10mM Tris with 1mM EDTA, pH 9.0, for 45 min at 95°C followed by cooling at RT for 20 minutes);

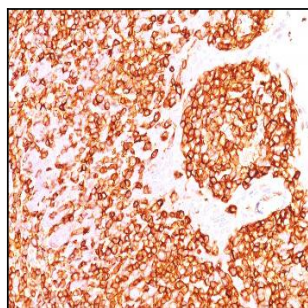


Fig. 1: Formalin-fixed, paraffin-embedded human Tonsil stained with CD45 Mouse Recombinant Monoclonal Antibody (rPTPRC/1460).

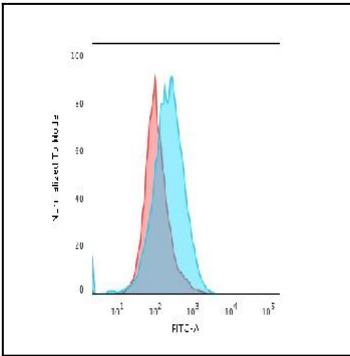


Fig. 2: Flow Cytometric Analysis of paraformaldehyde-fixed Raji cells using CD45 Mouse Recombinant Monoclonal Antibody (rPTPRC/1460) followed by Goat anti-Mouse- IgG-CF488 (Blue); Isotype Control (Red).

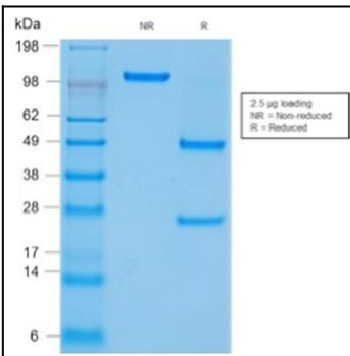


Fig. 3: SDS-PAGE Analysis Purified CD45 Mouse Recombinant Monoclonal Antibody (rPTPRC/1460). Confirmation of Integrity and Purity of Antibody

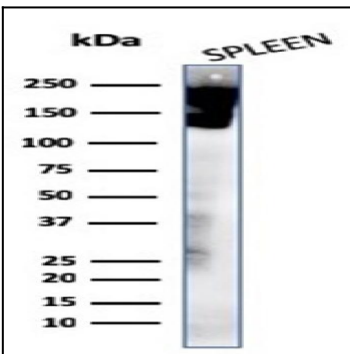


Fig. 4: Western Blot Analysis of human spleen tissue lysates using CD45 Mouse Recombinant Monoclonal Antibody (rPTPRC/1460)