

## 36-3061: Anti-Protein Tyrosine Phosphatase, non-receptor type 6 Monoclonal Antibody(Clone: CPTC-PTPN6-2)

<b>Clonality :</b>	Monoclonal
<b>Clone Name :</b>	CPTC-PTPN6-2
<b>Application :</b>	ELISA,WB
<b>Reactivity :</b>	Human
<b>Gene :</b>	PTPN6
<b>Gene ID :</b>	5777
<b>Uniprot ID :</b>	P29350
<b>Alternative Name :</b>	PTPN6; SHP1; protein tyrosine phosphatase, non-receptor type 6; HCP; HCPH; HPTP1C; PTP-1C; SH-PTP1; SHP-1; SHP-1L; 70 kda SHP-1L protein; hematopoietic cell phosphatase; hematopoietic cell protein-tyrosine phosphatase; protein-tyrosine phosphatase 1C; PTPN6 / SHP
<b>Isotype :</b>	Mouse IgG2a, kappa
<b>Immunogen Information :</b>	Recombinant human full-length PTPN6 protein

### Description

PTPN6, which is also designated as SHP-1, is expressed primarily in hematopoietic cells and characterized by the presence of two SH2 domains N-terminal to the PTP domain. It maps to 12p13, a region commonly involved in leukemia-associated chromosomal abnormalities. SHP-1 plays a role in modulating intracellular signaling for various molecules. In T-cell lymphomas and other malignancies, SHP-1 phosphatase expression is lost, by a thus far undetermined mechanism. Preliminary studies suggest that it may be helpful in differentiating mantle/marginal zone lymphomas (SHP-1+) from follicular lymphomas (SHP-1 negative).

### Product Info

<b>Amount :</b>	20 µg / 100 µg
<b>Content :</b>	200 µg/ml of Ab Purified from Bioreactor Concentrate by Protein A/G. Prepared in 10mM PBS with 0.05% BSA & 0.05% azide. Also available WITHOUT BSA & azide at 1.0mg/ml.
<b>Storage condition :</b>	Antibody with azide - store at 2 to 8°C. Antibody without azide - store at -20 to -80°C. Antibody is stable for 24 months. Non-hazardous.

### Application Note

ELISA (For coating, purchase antibody without BSA); Western Blot (1-2ug/ml);

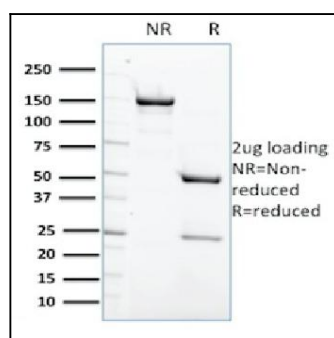


Fig. 1: SDS-PAGE Analysis Purified PTPN6 Mouse Monoclonal Antibody (CPTC-PTPN6-2). Confirmation of Purity and Integrity of Antibody.