

36-3044: Anti-Prolactin Receptor (hPRL Receptor) Monoclonal Antibody(Clone: rPRLR/742)

Clonality :	Monoclonal
Clone Name :	rPRLR/742
Application :	IHC
Reactivity :	Human
Gene :	PRLR
Gene ID :	5618
Uniprot ID :	P16471
Alternative Name :	CPRLP, hPRL receptor, hPRLrI, Lactogen receptor, OPR, Pr-1, Pr-3, PRL-R, Prolactin receptor delta 7/11, RATPRLR, Secreted prolactin binding protein, Truncated testis-specific box 1-C prolactin receptor
Isotype :	Mouse IgG1, kappa
Immunogen Information :	Recombinant full-length human PRLR protein

Description

It recognizes a protein of 70kDa, identified as prolactin receptor. Prolactin is a pituitary hormone involved in the stimulation of milk production, salt and water regulation, growth, development and reproduction. The initial step in its action is the binding to a specific membrane receptor (prolactin receptor), which belongs to the superfamily of class 1 cytokine receptors. The function of the prolactin receptor is mediated, at least in part, by two families of signaling molecules: Janus kinases and signal transducers and activators of transcription.

Product Info

Amount :	20 µg / 100 µg
Content :	200 µg/ml of Ab Purified from Bioreactor Concentrate by Protein A/G. Prepared in 10mM PBS with 0.05% BSA & 0.05% azide. Also available WITHOUT BSA at 1.0mg/ml.
Storage condition :	Antibody with azide - store at 2 to 8°C. Antibody is stable for 24 months. Non-hazardous.

Application Note

Immunohistochemistry (Formalin-fixed. Not suitable for frozen tissues.) (1-2ug/ml for 30 minutes at RT)(Staining of formalin-fixed tissues requires heating tissue sections in 10mM Tris with 1mM EDTA, pH 9.0, for 45 min at 95°C followed by cooling at RT for 20 minutes);

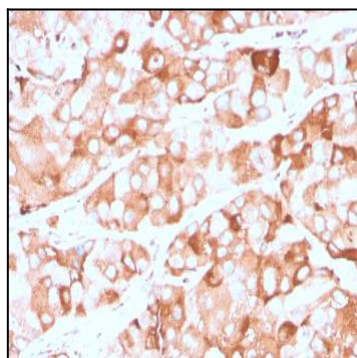


Fig. 1: Formalin-fixed, paraffin-embedded human breast carcinoma stained with Prolactin Receptor Recombinant Mouse Monoclonal Antibody (rPRLR742).

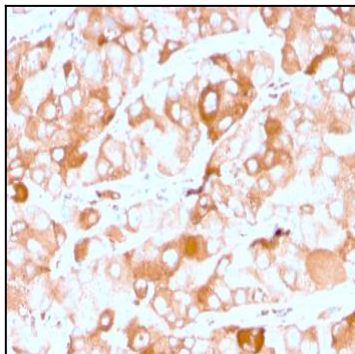


Fig. 2: Formalin-fixed, paraffin-embedded human breast carcinoma stained with Prolactin Receptor Recombinant Mouse Monoclonal Antibody (rPRLR742).

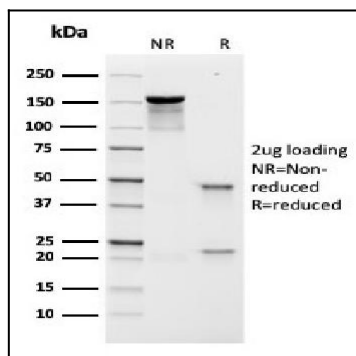


Fig. 3: SDS-PAGE Analysis Purified Prolactin Receptor Recombinant Mouse Monoclonal (rPRLR742). Confirmation of Integrity and Purity of Antibody.