

## 36-2991: Anti-DOG-1 / TMEM16A (Gastrointestinal Stromal Tumor Marker) Monoclonal Antibody (Clone: DG1/2564R)

<b>Clonality :</b>	Monoclonal
<b>Clone Name :</b>	DG1/2564R
<b>Application :</b>	IHC
<b>Reactivity :</b>	Human
<b>Gene :</b>	TMEM16A
<b>Gene ID :</b>	55107
<b>Uniprot ID :</b>	Q5XX6
<b>Alternative Name :</b>	Anoctamin 1; Calcium Activated Chloride Channel; Discovered On Gastrointestinal Stromal Tumors Protein 1; TAOS2; ORAOV2; TMEM16A
<b>Isotype :</b>	Rabbit IgG
<b>Immunogen Information :</b>	A recombinant human DOG-1 protein fragment (around aa 2-101) (exact sequence is proprietary)

### Description

Expression of DOG-1 protein is elevated in the gastrointestinal stromal tumors (GIST's), c-kit signaling-driven mesenchymal tumors of the GI tract. DOG-1 is rarely expressed in other soft tissue tumors, which, due to appearance, may be difficult to diagnose. Immunoreactivity for DOG-1 has been reported in 97.8 percent of scorable GIST's, including all c-kit negative GIST's. Overexpression of DOG-1 has been suggested to aid in the identification of GISTs, including Platelet-Derived Growth Factor Receptor Alpha mutants that fail to express c-kit antigen. The overall sensitivity of DOG1 and c-kit in GIST's is nearly identical: 94.4% vs. 94.7%.

### Product Info

<b>Amount :</b>	20 µg / 100 µg
<b>Content :</b>	200 µg/ml of Ab Purified from Bioreactor Concentrate by Protein A/G. Prepared in 10mM PBS with 0.05% BSA & 0.05% azide. Also available WITHOUT BSA & azide at 1.0mg/ml.
<b>Storage condition :</b>	Antibody with azide - store at 2 to 8°C. Antibody without azide - store at -20 to -80°C. Antibody is stable for 24 months. Non-hazardous.

### Application Note

Immunohistochemistry (Formalin-fixed) (1-2µg/ml for 30 minutes at RT)(Staining of formalin-fixed tissues requires heating tissue sections in 10mM Tris with 1mM EDTA, pH 9.0, for 45 min at 95°C followed by cooling at RT for 20 minutes);

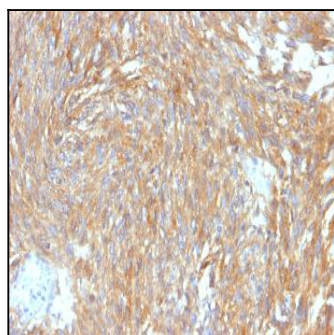


Fig. 1: Formalin-fixed, paraffin-embedded human GIST stained with DOG-1 Rabbit Recombinant Monoclonal Antibody (DG1/2564R).

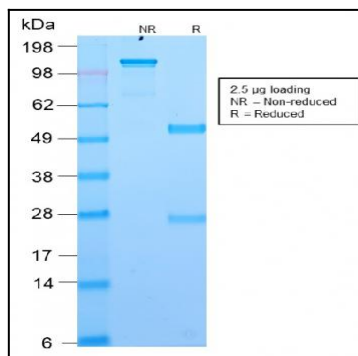


Fig. 2: SDS-PAGE Analysis Purified DOG-1 Rabbit Recombinant Monoclonal Antibody (DG1/2564R). Confirmation of Purity and Integrity of Antibody.