

### 36-1613: Monoclonal Antibody to CD45RO (T-Cell Marker)(Clone : SPM125)

<b>Clonality :</b>	Monoclonal
<b>Clone Name :</b>	SPM125
<b>Application :</b>	FACS,IF,WB,IHC
<b>Reactivity :</b>	Human
<b>Gene :</b>	PTPRC
<b>Gene ID :</b>	5788
<b>Uniprot ID :</b>	P08575
<b>Format :</b>	Purified
<b>Alternative Name :</b>	PTPRC,CD45
<b>Isotype :</b>	Mouse IgG2a, kappa
<b>Immunogen Information :</b>	Cultured human T-cells from an IL-2-dependent T-cell line (CA1)

#### Description

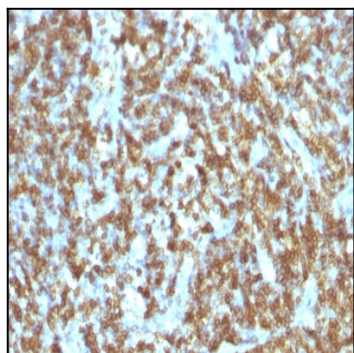
Recognizes a 180-185kDa protein, identified as isoform of leukocyte common antigen (CD45RO). The epitope recognized by this antibody is sensitive to neuraminidase digestion. This antibody reacts with mature activated T-cells, most thymocytes, and a sub-population of resting T-cells within both CD4 and CD8 subsets. It shows no reactivity with normal B or natural killer cells, but reacts with granulocytes and monocytes. Reportedly, it is useful to identify T-cell lymphomas and leukemias. It rarely stains NK cells or B-cell lymphomas.

#### Product Info

<b>Amount :</b>	100 µg
<b>Purification :</b>	Affinity Chromatography
<b>Content :</b>	100 µg in 500 µl PBS containing 0.05% BSA and 0.05% sodium azide. Sodium azide is highly toxic.
<b>Storage condition :</b>	Store the antibody at 4°C; stable for 6 months. For long-term storage; store at -20°C. Avoid repeated freeze and thaw cycles.

#### Application Note

Flow Cytometry (1-2ug/million cells); Immunofluorescence (1-2ug/ml); Western Blot (1-2ug/ml); Immunohistochemistry (Formalin-fixed) (1-2ug/ml for 30 minutes at RT)(Staining of formalin-fixed tissues requires heating tissue sections in 10mM Tris with 1mM EDTA, pH 9.0, for 45 min at 95&degC followed by cooling at RT for 20 minutes);



Formalin-fixed, paraffin-embedded human Lymphoma stained with CD45RO Monoclonal Antibody (SPM125).