

36-2942: Anti-Alpha-1-Antitrypsin (SERPINA1) (Hepatocellular & Histiocytic Marker) Monoclonal Antibody(Clone: AAT/3167R)

Clonality :	Monoclonal
Clone Name :	AAT/3167R
Application :	WB,IHC
Reactivity :	Human
Gene :	SERPINA1
Gene ID :	5265
Uniprot ID :	P01009
Alternative Name :	A1AT; Alpha-1 protease inhibitor; Alpha-1-antiproteinase (Alpha1AT); Dom1; Serine (or cysteine) proteinase inhibitor clade A member 1; Serpin peptidase inhibitor clade A member 1; Short peptide from AAT (SPAAT); Spi1-1
Isotype :	Rabbit IgG
Immunogen Information :	Recombinant human Alpha-1-Antitrypsin (AAT) protein fragment

Description

It recognizes a protein of 54kDa, which is identified antitrypsin (AAT). The immunohistochemical staining of AAT is useful in identification of benign and malignant hepatic tumors and yolk sac carcinomas. Positive staining for AAT is also used in detection of benign and malignant lesions of histiocytic nature. This antibody is may also useful tool in the screening of patients with cryptogenic cirrhosis or other forms of liver disease with fibrosis of uncertain origin.

Product Info

Amount :	20 µg / 100 µg
Content :	200 µg/ml of Ab Purified from Bioreactor Concentrate by Protein A/G. Prepared in 10mM PBS with 0.05% BSA & 0.05% azide. Also available WITHOUT BSA & azide at 1.0mg/ml.
Storage condition :	Antibody with azide - store at 2 to 8°C. Antibody without azide - store at -20 to -80°C. Antibody is stable for 24 months. Non-hazardous.

Application Note

Western Blot (1-2ug/ml); Immunohistochemistry (Formalin-fixed) (1-2ug/ml for 30 minutes at RT)(Staining of formalin-fixed tissues requires heating tissue sections in 10mM Tris with 1mM EDTA, pH 9.0, for 45 min at 95°C followed by cooling at RT for 20 minutes);

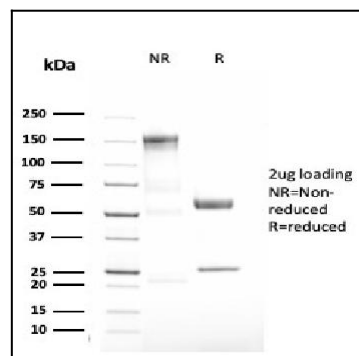


Fig. 1: SDS-PAGE Analysis Purified Alpha-1-Antitrypsin Recombinant Rabbit Monoclonal (AAT/3167R). Confirmation of Purity and Integrity of Antibody.

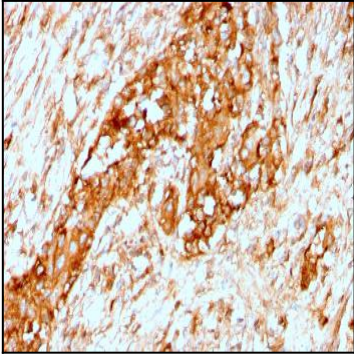


Fig. 2: Formalin-fixed, paraffin-embedded human Breast stained with Alpha-1-Antitrypsin Recombinant Rabbit Monoclonal Antibody (AAT/3167R).