

36-2913: Anti-CD31 / PECAM-1 (Endothelial Cell Marker) Monoclonal Antibody(Clone: PECAM1/3527)

Clonality :	Monoclonal
Clone Name :	PECAM1/3527
Application :	WB,FACS,IF,IHC
Reactivity :	Human
Gene :	PECAM1
Gene ID :	5175
Uniprot ID :	P16284
Alternative Name :	EndoCAM; PECA1; Platelet Endothelial Cell Adhesion Molecule 1; GPIIA'
Isotype :	Mouse IgG
Immunogen Information :	Recombinant fragment (around aa 625-738) of human CD31 protein (exact sequence is proprietary)

Description

CD31 (PECAM-1) is a transmembrane glycoprotein member of the immunoglobulin supergene family of adhesion molecules. CD31 is expressed by stem cells of the hematopoietic system and is primarily used to identify and concentrate these cells for experimental studies as well as for bone marrow transplantation. Anti-CD31 has shown to be highly specific and sensitive for vascular endothelial cells. Staining of nonvascular tumors (excluding hematopoietic neoplasms) is rare. CD31 MAb reacts with normal, benign, and malignant endothelial cells which make up blood vessel lining. The level of CD31 expression can help to determine the degree of tumor angiogenesis, and a high level of CD31 expression may imply a rapidly growing tumor and potentially a predictor of tumor recurrence.

Product Info

Amount :	20 µg / 100 µg
Content :	200 µg/ml of Ab Purified from Bioreactor Concentrate by Protein A/G. Prepared in 10mM PBS with 0.05% BSA & 0.05% azide. Also available WITHOUT BSA & azide at 1.0mg/ml.
Storage condition :	Antibody with azide - store at 2 to 8°C. Antibody without azide - store at -20 to -80°C. Antibody is stable for 24 months. Non-hazardous.

Application Note

Western Blot (2-4ug/ml); Flow Cytometry (1-2ug/million cells); Immunofluorescence (1-2ug/ml); Immunohistochemistry (Formalin-fixed) (1-2ug/ml for 30 minutes at RT),(Staining of formalin-fixed tissues requires heating tissue sections in 10mM Tris with 1mM EDTA, pH 9.0, for 45 min at 95°C followed by cooling at RT for 20 minutes);

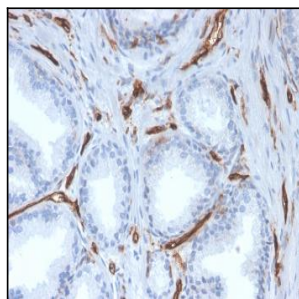


Fig. 1: Formalin-fixed, paraffin-embedded human prostate stained with CD31 Mouse Monoclonal Antibody (PECAM1/3527).

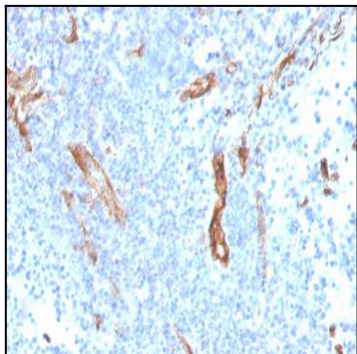


Fig. 2: Formalin-fixed, paraffin-embedded human prostate stained with CD31 Mouse Monoclonal Antibody (PECAM1/3527).

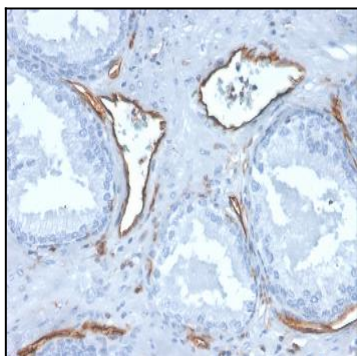


Fig. 3: Formalin-fixed, paraffin-embedded human prostate stained with CD31 Mouse Monoclonal Antibody (PECAM1/3527).

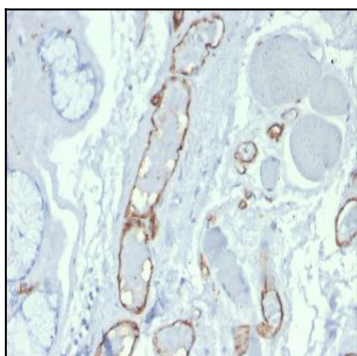


Fig. 4: Formalin-fixed, paraffin-embedded human tonsil stained with Purified CD31 Mouse Monoclonal Antibody (PECAM1/3527).

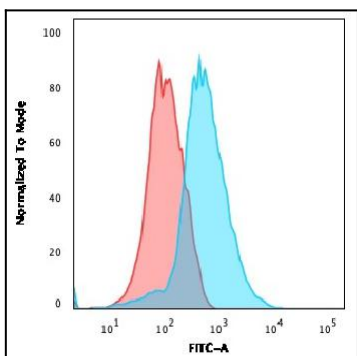


Fig. 5: Flow Cytometric Analysis of Jurkat cells using CD31 Mouse Monoclonal Antibody (PECAM1/3527) followed by goat anti-Mouse IgG-CF488 (Blue); Isotype Control (Red).

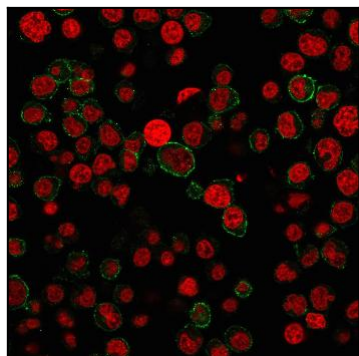


Fig. 6: Immunofluorescence staining of Jurkat cells using CD31 Mouse Monoclonal Antibody (PECAM1/3527) followed by goat anti-Mouse IgG conjugated to CF488 (green). Nuclei are stained with Reddot

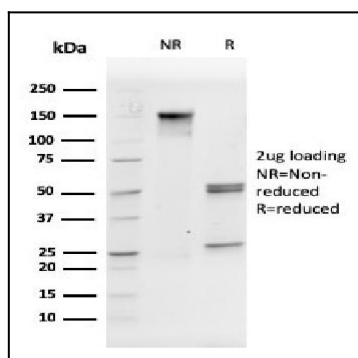


Fig. 7: SDS-PAGE Analysis Purified CD31 Mouse Monoclonal Antibody (PECAM1/3527). Confirmation of Integrity and Purity of Antibody.