

## 36-2882: Anti-Ornithine Decarboxylase-1 (ODC-1) Monoclonal Antibody(Clone: ODC1/485)-CF488

<b>Clonality :</b>	Monoclonal
<b>Clone Name :</b>	ODC1/485
<b>Application :</b>	FACS,IF
<b>Reactivity :</b>	Human
<b>Conjugate :</b>	CF488
<b>Gene :</b>	ODC1
<b>Gene ID :</b>	4953
<b>Uniprot ID :</b>	P11926
<b>Alternative Name :</b>	Ornithine decarboxylase structural 1; RNODC
<b>Isotype :</b>	Mouse IgG1, kappa
<b>Immunogen Information :</b>	Recombinant human ODC-1 protein

### Description

Recognizes a 53kDa protein, identified as the Ornithine Decarboxylase (ODC-1). ODC is the initial and rate-limiting enzyme in the biosynthetic pathway of polyamines and is involved in the conversion of ornithine to putrescine. The biological activity of ODC-1 is rapidly induced in response to virtually all agents known to promote cell proliferation including hormones, drugs, growth factors, mitogens, and tumor promoters. Reportedly, ODC mRNA levels are elevated in lung carcinomas as well as in colon adenomas and carcinomas. ODC activity in colorectal carcinomas is greater than those in adenomas and normal mucosa.

### Product Info

<b>Amount :</b>	0.5 ml at 100µg/ml
<b>Content :</b>	Antibody Purified from Bioreactor Concentrate by Protein A/G and conjugated to various reporter molecules. Prepared in 10mM PBS with 0.05% BSA and 0.05% azide. Contact us if you require this Ab in a different format.
<b>Storage condition :</b>	Antibody with azide - store at 4 to 8°C. Antibody is stable for 24 months. Non-hazardous.

### Application Note

Flow Cytometry (5ul per test per one million cells or 5ul per 100ul of whole blood);Immunofluorescence (1:50-1:100);

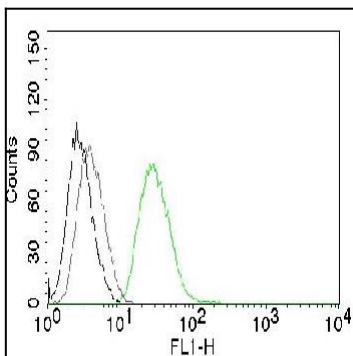


Fig. 1: Flow Cytometry of human ODC1 on PC3 cells. Black: cells alone; Grey: Isotype Control; Green: CF488-labeled ODC1 Monoclonal Antibody (ODC1/485).