

36-2873: Anti-NRF1 Monoclonal Antibody(Clone: NRF1/2609)

Clonality :	Monoclonal
Clone Name :	NRF1/2609
Application :	WB,IHC
Reactivity :	Human
Gene :	NFE2L1
Gene ID :	4899
Uniprot ID :	Q16656
Alternative Name :	alpha pal; Alpha palindromic-binding protein; Alpha-pal; locus control region factor 1; NFE2 related factor 1; Nuclear respiratory factor 1 (NFR-1)
Isotype :	Mouse IgG1, kappa
Immunogen Information :	Recombinant full-length human NRF1 protein

Description

The NF-E2 DNA binding protein is composed of two subunits, p45 and MafK, and it regulates expression of globin genes in developing erythroid cells through interaction with Maf recognition elements (MAREs). A family of NF-E2 related proteins, which are collectively known as the Cap 'n' collar (CNC) family and include Nrf1 (also designated TCF11), Nrf2 and Nrf3, are bZIP transcription factors that heterodimerize with Maf proteins to bind MARE sequences. The Nrf proteins also bind the antioxidant response element (ARE) and are implicated in the regulation of detoxification enzymes and the oxidative stress response. They do so by heterodimerizing with Jun family members (c-Jun, JunB and JunD) to activate gene expression, specifically the detoxifying enzyme, NQO1. Nrf2 is widely expressed and is thought to translocate to the nucleus after treatment with xenobiotics and antioxidants, which stimulate its release from a repressor protein Keap1. Nrf3 is highly expressed in placenta, B cells and monocytes.

Product Info

Amount :	20 µg / 100 µg
Content :	200 µg/ml of Ab Purified from Bioreactor Concentrate by Protein A/G. Prepared in 10mM PBS with 0.05% BSA & 0.05% azide. Also available WITHOUT BSA & azide at 1.0mg/ml.
Storage condition :	Antibody with azide - store at 2 to 8°C. Antibody without azide - store at -20 to -80°C. Antibody is stable for 24 months. Non-hazardous.

Application Note

Western Blot (1-2ug/ml); Immunohistochemistry (Formalin-fixed) (1-2ug/ml for 30 min at RT)(Staining of formalin-fixed tissues requires heating tissue sections in 10mM Tris with 1mM EDTA, pH 9.0, for 45 min at 95°C followed by cooling at RT for 20 minutes);

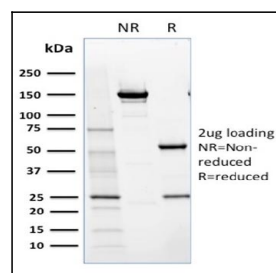


Fig. 1: SDS-PAGE Analysis Purified NRF1 Mouse Monoclonal Antibody (NRF1/2609). Confirmation of Purity and Integrity of Antibody.

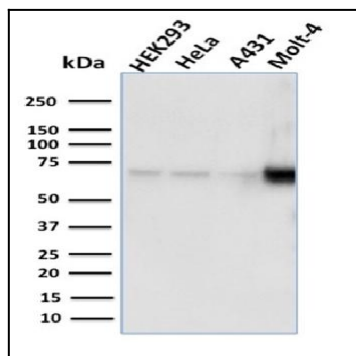


Fig. 2: Western Blot Analysis of human HEK293, HeLa, A431, MOLT4 cell lysates using NRF1 Mouse Monoclonal Antibody (NRF1/2609).

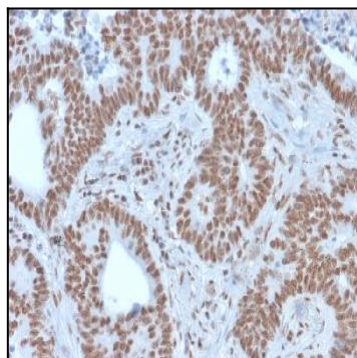


Fig. 3: Formalin-fixed, paraffin-embedded human colon carcinoma stained with NRF1 Mouse Monoclonal Antibody (NRF1/2609).

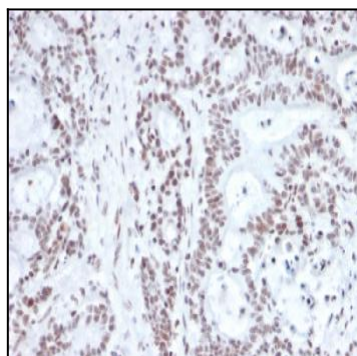


Fig. 4: Formalin-fixed, paraffin-embedded human prostate carcinoma stained with NRF1 Mouse Monoclonal Antibody (NRF1/2609).