

## 36-2842: Anti-Nucleolin (Marker of Human Cells) Monoclonal Antibody(Clone: NCL/902)-CF488

<b>Clonality :</b>	Monoclonal
<b>Clone Name :</b>	NCL/902
<b>Application :</b>	FACS,IF,
<b>Reactivity :</b>	Human
<b>Conjugate :</b>	CF488
<b>Gene :</b>	NCL
<b>Gene ID :</b>	4691
<b>Uniprot ID :</b>	P19338
<b>Alternative Name :</b>	NCL; Nucl; Nucleolin; Protein C23
<b>Isotype :</b>	Mouse IgG1, kappa
<b>Immunogen Information :</b>	Recombinant human NCL protein

### Description

Recognizes a protein of ~76kDa, which is identified as Nucleolin (NCL). It is the major nucleolar phosphoprotein of growing eukaryotic cells. NCL is located mainly in dense fibrillar regions of the nucleolus. It is found associated with intranucleolar chromatin and pre-ribosomal particles. Human NCL gene consists of 14 exons with 13 introns and spans approximately 11kb. It induces chromatin decondensation by binding to histone H1. It is thought to play a role in pre-rRNA transcription and ribosome assembly. This MAb can be used to stain the nucleoli in cell or tissue preparations and can be used as a marker of the nucleoli in subcellular fractions. It produces a speckled pattern in the nuclei of cells of normal and malignant cells and may be used to stain the nucleoli of cells in fixed or frozen tissue sections. It can be used with paraformaldehyde fixed frozen tissue or cell preparations and formalin fixed, paraffin-embedded tissue sections.

### Product Info

<b>Amount :</b>	0.5 ml at 100µg/ml
<b>Content :</b>	200 µg/ml of Ab Purified from Bioreactor Concentrate by Protein A/G. Prepared in 10mM PBS with 0.05% BSA & 0.05% azide. Also available WITHOUT BSA & azide at 1.0mg/ml.
<b>Storage condition :</b>	Antibody with azide - store at 4 to 8°C. Antibody is stable for 24 months. Non-hazardous.

### Application Note

Flow Cytometry (5ul per test per one million cells in 0.1ml or 5ul per 100ul of whole blood); Immunofluorescence (1:50-1:100); (Staining of formalin-fixed tissues requires heating tissue sections in 10mM Tris with 1mM EDTA, pH 9.0, for 45 min at 95&degC followed by cooling at RT for 20 minutes);

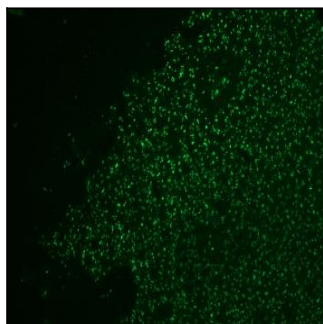


Fig. 1: Formalin-fixed, paraffin-embedded human Colon Carcinoma stained with CF488-labeled Nucleolin Monoclonal Antibody (NCL/902).

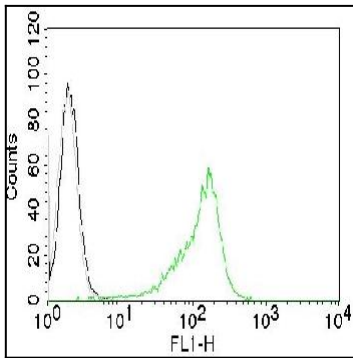


Fig. 2: Flow Cytometric Analysis of human Nucleolin on 293T cells. Black: cells alone; Grey: Isotype Control; Green: CF488-labeled Nucleolin Monoclonal Antibody (NCL/902).