

## 36-2817: Anti-MUC1 / CA15-3 / EMA / CD227 (Epithelial Marker) Monoclonal Antibody(Clone: MUC1/2818R)

<b>Clonality :</b>	Monoclonal
<b>Clone Name :</b>	MUC1/2818R
<b>Application :</b>	WB,ELISA,IHC
<b>Reactivity :</b>	Human, Mouse
<b>Gene :</b>	MUC1
<b>Gene ID :</b>	4582
<b>Uniprot ID :</b>	P15941
<b>Alternative Name :</b>	Breast carcinoma-associated antigen DF3, CA15-3, H23AG, KL-6, MAM6, Mucin 1 cell surface associated, , Peanut-reactive urinary mucin, PEM, PEMT, Polymorphic epithelial mucin, Tumor-associated epithelial membrane antigen
<b>Isotype :</b>	Rabbit IgG
<b>Immunogen Information :</b>	Human milk-fat globule membranes (HMFGM)

### Description

This MAb reacts with MUC1. The dominant epitope of this MAb has not yet been determined. MUC1 is a large cell surface mucin glycoprotein expressed by most glandular and ductal epithelial cells and some hematopoietic cell lineages. It is expressed on most secretory epithelium, including mammary gland and some hematopoietic cells. It is expressed abundantly in lactating mammary glands and over expressed abundantly in 90% breast carcinomas and metastases. Transgenic MUC1 has been shown to associate with all four c-erbB receptors and localize with c-erbB1 (EGFR) in lactating glands. The MUC1 gene contains seven exons and produces several different alternatively spliced variants. The major expressed form of MUC1 uses all seven exons and is a type 1 transmembrane protein with a large extracellular tandem repeat domain. The tandem repeat domain is highly O glycosylated and alterations in glycosylation have been shown in epithelial cancer cells. Antibody to EMA is useful as a pan-epithelial marker for detecting early metastatic loci of carcinoma in bone marrow or liver.

### Product Info

<b>Amount :</b>	20 µg / 100 µg
<b>Content :</b>	200 µg/ml of Ab Purified from Bioreactor Concentrate by Protein A/G. Prepared in 10mM PBS with 0.05% BSA & 0.05% azide. Also available WITHOUT BSA & azide at 1.0mg/ml.
<b>Storage condition :</b>	Antibody with azide - store at 2 to 8°C. Antibody without azide - store at -20 to -80°C. Antibody is stable for 24 months. Non-hazardous.

### Application Note

Western Blot (1-2ug/ml); ELISA (For coating use Ab at 2-5ug/ml, order Ab without BSA) (Very good capturing Ab); Immunohistochemistry (Formalin-fixed) (0.25-0.5ug/ml for 30 minutes at RT)(Staining of formalin-fixed tissues requires heating tissue sections in 10mM Tris with 1mM EDTA, pH 9.0, for 45 min at 95&degC followed by cooling at RT for 20 minutes);

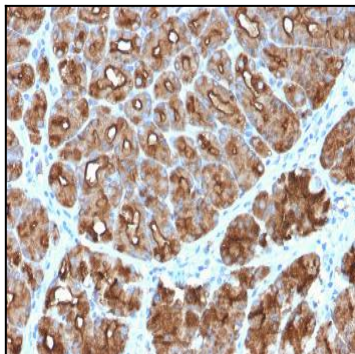


Fig. 1: Formalin-fixed, paraffin-embedded human Stomach Carcinoma stained with MUC1 Rabbit Recombinant Monoclonal Antibody (MUC1/2818R).

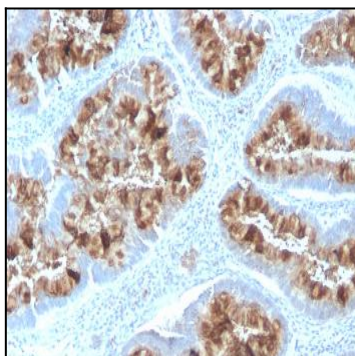


Fig. 2: Formalin-fixed, paraffin-embedded human Colon stained with MUC1 Rabbit Recombinant Monoclonal Antibody (MUC1/2818R).

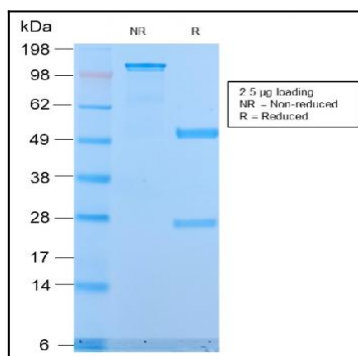


Fig. 3: SDS-PAGE Analysis Purified MUC1 Rabbit Recombinant Monoclonal Antibody (MUC1/2818R). Confirmation of Purity and Integrity of Antibody.