

36-2791: Anti-MMP3 (Marker of Metastasis and Rheumatoid Arthritis) Monoclonal Antibody(Clone: MMP3/2655)

Clonality :	Monoclonal
Clone Name :	MMP3/2655
Application :	ELISA,WB
Reactivity :	Human
Gene :	MMP3
Gene ID :	4314
Uniprot ID :	P08254
Alternative Name :	CHDS6; Matrix metalloproteinase 3; Matrix metalloproteinase-3; MMP3; Proteoglycanase; SL1; STMY1; STR1; Stromelysin-1; Transin 1
Isotype :	Mouse IgG2b, kappa
Immunogen Information :	Recombinant fragment of human MMP3 protein (around aa 236-363) (exact sequence is proprietary)

Description

The matrix metalloproteinases (MMP) are a family of peptidase enzymes responsible for the degradation of extracellular matrix components, including collagen, gelatin, fibronectin, laminin and proteoglycan. Transcription of MMP genes is differentially activated by phorbol ester, lipopolysaccharide (LPS) or staphylococcal enterotoxin B (SEB). MMP catalysis requires both calcium and zinc. MMP-3, MMP-10 and MMP-11 (also designated stromelysin-1, 2 and 3, respectively) activate procollagenase. MMP-3 activation of procollagenase can occur via two pathways. Direct activation by MMP-3 is slow and activation by MMP-3 in conjunction with tissue or plasma proteinases is rapid. MMP-10 is expressed in small intestine, and at lower levels in lung and heart. MMP-11 is specifically expressed in stromal cells of breast carcinomas and contributes to epithelial cell malignancies.

Product Info

Amount :	20 µg / 100 µg
Content :	200 µg/ml of Ab Purified by Protein A. Prepared in 10mM PBS with 0.05% BSA & 0.05% azide. Also available WITHOUT BSA & azide at 1.0mg/ml.
Storage condition :	Antibody with azide - store at 2 to 8°C. Antibody without azide - store at -20 to -80°C. Antibody is stable for 24 months. Non-hazardous.

Application Note

ELISA (For coating, order Ab without BSA);Western Blot (1-2ug/ml);

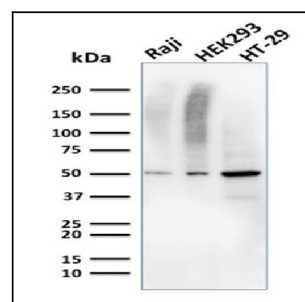


Fig. 1: Western Blot Analysis of Human Raji, HEK293, and HT-29 cell lysate using MMP3 Mouse Monoclonal Antibody (MMP3/2655).

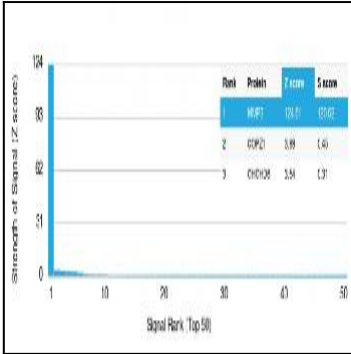


Fig. 2: Analysis of Protein Array containing more than 19,000 full-length human proteins using MMP3 Mouse Monoclonal Antibody (MMP3/2655). Z- and S- Score: The Z-score represents the strength of a signal that a monoclonal antibody (Monoclonal Antibody) (in combination with a fluorescently-tagged anti-IgG secondary antibody) produces when binding to a particular protein on the HuProt™ array. Z-scores are described in units of standard deviations (SD's) above the mean value of all signals generated on that array. If targets on HuProt™ are arranged in descending order of the Z-score, the S-score is the difference (also in units of SD's) between the Z-score. S-score therefore represents the relative target specificity of a Monoclonal Antibody to its intended target. A Monoclonal Antibody is considered to specific to its intended target, if the Monoclonal Antibody has an S-score of at least 2.5. For example, if a Monoclonal Antibody binds to protein X with a Z-score of 43 and to protein Y with a Z-score of 14, then the S-score for the binding of that Monoclonal Antibody to protein X is equal to 29.