

36-2766: Anti-Mammaglobin (SCGB2A2) (Breast Cancer Marker) Monoclonal Antibody(Clone: MGB1/2682R)

Clonality :	Monoclonal
Clone Name :	MGB1/2682R
Application :	WB,IF,IHC
Reactivity :	Human
Gene :	SCGB2A2
Gene ID :	4250
Uniprot ID :	Q13296
Alternative Name :	Mammaglobin-1 (MGB1); Mammaglobin-A; Secretoglobin family 2A member 2 (SCGB2A2); SG2A2; ÅµgB2
Isotype :	Rabbit IgG
Immunogen Information :	Recombinant full-length human Mammaglobin (SCGB2A2) protein

Description

Mammaglobin is a 93 amino acid glycoprotein with homology to other secretoglobin-uteroglobin family members. It was originally identified as a breast cancer restricted biomarker by differential screening. Mammaglobin related to secretoglobin family that includes human uteroglobin and lipophilin. Mammaglobin antibody stains cytoplasm of normal breast epithelial cells as well as primary and metastatic breast carcinomas. Mammaglobin expression is absent in prostate, kidney, colon, rectum, small intestine, stomach, pancreas, lung, and thyroid tissues. Mammaglobin may be used as part of an immunohistochemical panel for determination of metastatic breast carcinoma and tumor of unknown primary origin.

Product Info

Amount :	20 µg / 100 µg
Content :	200 µg/ml of Ab Purified from Bioreactor Concentrate by Protein A/G. Prepared in 10mM PBS with 0.05% BSA & 0.05% azide. Also available WITHOUT BSA & azide at 1.0mg/ml.
Storage condition :	Antibody with azide - store at 2 to 8°C. Antibody without azide - store at -20 to -80°C. Antibody is stable for 24 months. Non-hazardous.

Application Note

Western Blot (1-2ug/ml); Immunofluorescence (1-2ug/ml); Immunohistochemistry (Formalin-fixed) (0.1-0.2ug/ml for 30 min at RT)(Staining of formalin-fixed tissues requires heating tissue sections in 10mM Tris with 1mM EDTA, pH 9.0, for 45 min at 95°C followed by cooling at RT for 20 minutes);

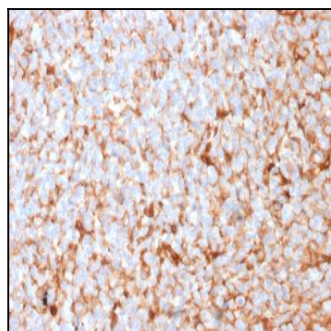


Fig. 1: Formalin-fixed, paraffin-embedded human Breast Carcinoma stained with Mammaglobin Recombinant Rabbit Monoclonal Antibody (MGB1/2682R).

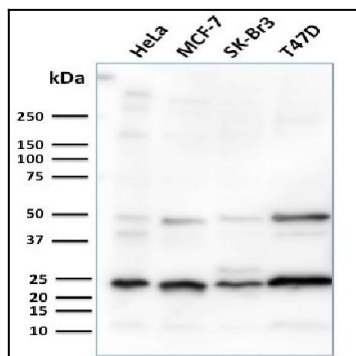


Fig. 2: Western Blot Analysis of human HeLa, MCF-7, SK-BR3 & T47D cell lysates using Mammaglobin Recombinant Rabbit Monoclonal Antibody (MGB1/2682R).

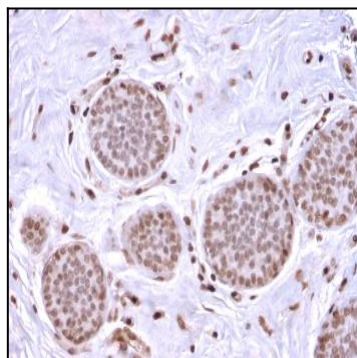


Fig. 3: Formalin-fixed, paraffin-embedded human Breast Carcinoma stained with Mammaglobin Recombinant Rabbit Monoclonal Antibody (MGB1/2682R).

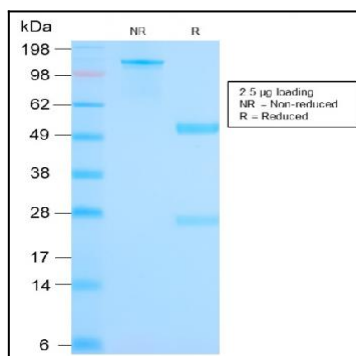


Fig. 4: SDS-PAGE Analysis Purified Mammaglobin Recombinant Rabbit Monoclonal Ab (MGB1/2682R). Confirmation of Purity and Integrity of Antibody.