

36-2762: Anti-Milk Fat Globule (Breast Epithelial Marker) Monoclonal Antibody(Clone: MFG-06)

Clonality :	Monoclonal
Clone Name :	MFG-06
Application :	IHC
Reactivity :	Human
Gene :	MFGE8
Gene ID :	4240
Uniprot ID :	Q08431
Alternative Name :	Breast epithelial antigen BA46; EDIL1; HMFG; Lactadherin; Lactadherin precursor; Medin; MFGE8; MFGM; Milk fat globule-EGF factor 8 (MFG-E8)
Isotype :	Mouse IgG1, kappa
Immunogen Information :	Human milk fat globule membrane preparation

Description

Recognizes a protein of 40-45kDa, identified as human milk fat globule membrane protein (HMFG). HMFG is present on normal human breast epithelial cells and cell lines derived from breast carcinomas, as well as to the outer surface of the human milk fat globule. HMFG is considered as a differentiation marker. It is useful as specific breast epithelial marker and can also provide a tool to study the role of the cell surface in normal and neoplastic mammary development.

Product Info

Amount :	20 µg / 100 µg
Content :	200 µg/ml of Ab Purified from Bioreactor Concentrate by Protein A/G. Prepared in 10mM PBS with 0.05% BSA & 0.05% azide. Also available WITHOUT BSA & azide at 1.0mg/ml.
Storage condition :	Antibody with azide - store at 2 to 8°C. Antibody without azide - store at -20 to -80°C. Antibody is stable for 24 months. Non-hazardous.

Application Note

Immunohistochemistry (Formalin-fixed) (1-2ug/ml for 30 min at RT)(Staining of formalin-fixed tissues requires heating tissue sections in 10mM Tris with 1mM EDTA, pH 9.0, for 45 min at 95°C followed by cooling at RT for 20 minutes);

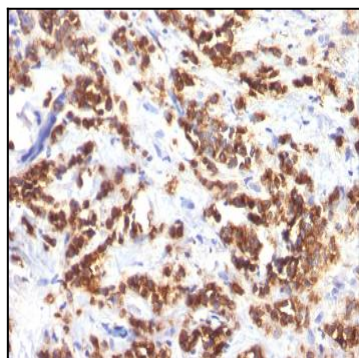


Fig. 1: Formalin-fixed, paraffin-embedded human Breast Carcinoma stained with Milk Fat Globule Monoclonal Antibody (MFG-06)

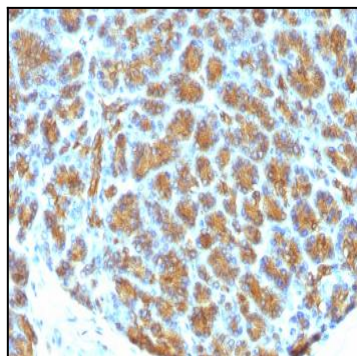


Fig. 2: Formalin-fixed, paraffin-embedded human Pancreas stained with Milk Fat Globule Monoclonal Antibody (MFG-06)

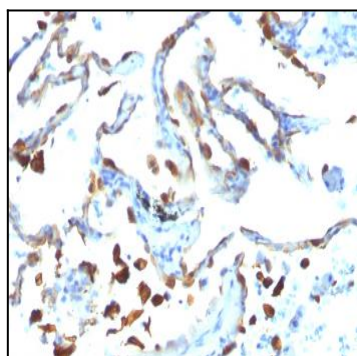


Fig. 3: Formalin-fixed, paraffin-embedded human Lung Carcinoma stained with Milk Fat Globule Monoclonal Antibody (MFG-06)

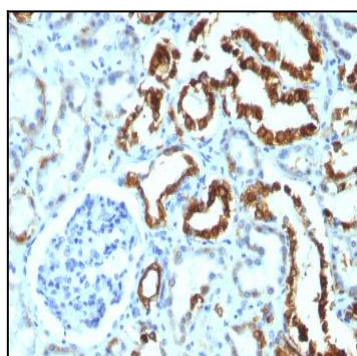


Fig. 4: Formalin-fixed, paraffin-embedded human Renal Cell Carcinoma stained with Milk Fat Globule Monoclonal Antibody (MFG-06)

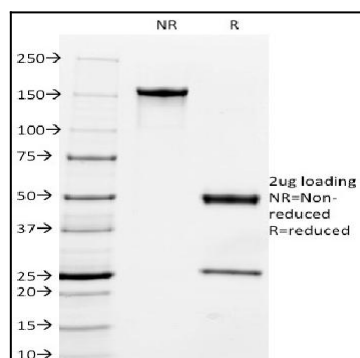


Fig. 5: SDS-PAGE Analysis Purified Milk Fat Globule Monoclonal Antibody (MFG-06). Confirmation of Integrity and Purity of Antibody