

## 36-2760: Anti-MDM2 Monoclonal Antibody(Clone: SMP14)

|                                |  |
|--------------------------------|--|
| <b>Clonality :</b>             | Monoclonal   |
| <b>Clone Name :</b>            | SMP14  |
| <b>Application :</b>           | ELISA,WB,IHC   |
| <b>Reactivity :</b>            | Human, Mouse, Rat  |
| <b>Gene :</b>                  | MDM2   |
| <b>Gene ID :</b>               | 4193   |
| <b>Uniprot ID :</b>            | Q00987   |
| <b>Alternative Name :</b>      | ACTFS; Double minute 2 protein; E3 ubiquitin-protein ligase; Hdm2; HDMX; MDM2; MDM2 oncogene E3 ubiquitin protein ligase; MDM2BP; Mouse Double Minute 2; MTBP; Murine Double Minute Chromosome 2; p53 Binding Protein Mdm2; p53-binding protein Mdm2 |
| <b>Isotype :</b>               | Mouse IgG1, kappa  |
| <b>Immunogen Information :</b> | A synthetic peptide (aa 154-167) of human MDM2 protein.  |

### Description

MDM2 is a nuclear phosphoprotein that binds and inhibits transactivation by tumor protein p53. It can promote tumor formation by targeting tumor suppressor proteins, such as p53, for proteasomal degradation. Overexpression of MDM2 can result in excessive inactivation of tumor protein p53, diminishing its tumor suppressor function. This protein also affects the cell cycle, apoptosis, and tumorigenesis through interactions with other proteins, including retinoblastoma 1 and ribosomal protein L5. Overexpression of MDM2 protein is detected in a variety of cancers.

### Product Info

|                            |   |
|----------------------------|---|
| <b>Amount :</b>            | 20 µg / 100 µg  |
| <b>Content :</b>           | 200 µg/ml of Ab Purified from Bioreactor Concentrate by Protein A/G. Prepared in 10mM PBS with 0.05% BSA & 0.05% azide. Also available WITHOUT BSA & azide at 1.0mg/ml. |
| <b>Storage condition :</b> | Antibody with azide - store at 2 to 8°C. Antibody without azide - store at -20 to -80°C. Antibody is stable for 24 months. Non-hazardous.                               |

### Application Note

ELISA (For coating, order antibody without BSA); Western Blot (1-2ug/ml); Immunohistochemistry (Formalin-fixed) (1-2ug/ml for 30 minutes at RT)(Staining of formalin-fixed tissues requires heating tissue sections in 10mM Tris with 1mM EDTA, pH 9.0, for 45 min at 95&degC followed by cooling at RT for 20 minutes);

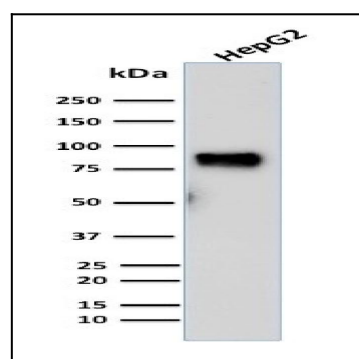


Fig. 1: Western Blot Analysis of human HepG2 cell lysate using MDM2 Mouse Monoclonal Antibody (SMP14).

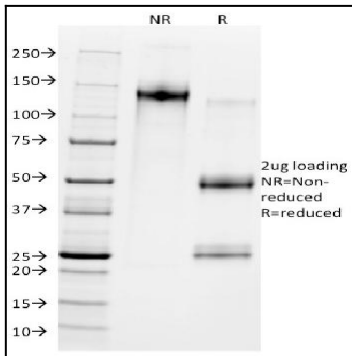


Fig. 2: SDS-PAGE Analysis Purified MDM2 Mouse Monoclonal Antibody (SMP14). Confirmation of Purity and Integrity of Antibody.

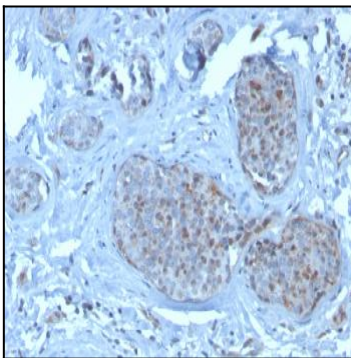


Fig. 3: Formalin-fixed, paraffin-embedded human breast carcinoma stained with MDM2 Mouse Monoclonal Antibody (SMP14).