

36-2741: Anti-MBD1 (Methyl-CpG Binding Domain Protein 1) Monoclonal Antibody(Clone: CPTC-MBD1-1)

Clonality :	Monoclonal
Clone Name :	CPTC-MBD1-1
Application :	IHC
Reactivity :	Human
Gene :	MBD1
Gene ID :	4152
Uniprot ID :	Q9UIS9
Alternative Name :	CXXC-type zinc finger protein 3; CXXC3; MBD1; MECP1 COMPLEX; Methyl-CpG-binding domain protein 1 (MBD1); Protein containing methyl-CpG-binding domain 1 (PCM1); Regulator of fibroblast growth factor 2 (FGF 2) transcription (RFT)
Isotype :	Mouse IgG1, kappa
Immunogen Information :	Recombinant human MBD1 protein

Description

DNA methylation is the major modification of eukaryotic genomes and plays an essential role in mammalian development. Human proteins MECP2, MBD1, MBD2, MBD3, and MBD4 comprise a family of nuclear proteins related by the presence in each of a methyl-CpG binding domain (MBD). Each of these proteins, with the exception of MBD3, is capable of binding specifically to methylated DNA. MECP2, MBD1 and MBD2 can also repress transcription from methylated gene promoters. MBD1 has also been predicted to be involved in the development and progression of tumors, and it has been shown that MBD1 is significantly upregulated in pancreatic cancer tissues when compared with surrounding normal tissues. Furthermore, MBD1 may serve as a potential therapeutic target for pancreatic cancer.

Product Info

Amount :	20 µg / 100 µg
Content :	200 µg/ml of Ab Purified from Bioreactor Concentrate by Protein A/G. Prepared in 10mM PBS with 0.05% BSA & 0.05% azide. Also available WITHOUT BSA & azide at 1.0mg/ml.
Storage condition :	Antibody with azide - store at 2 to 8°C. Antibody without azide - store at -20 to -80°C. Antibody is stable for 24 months. Non-hazardous.

Application Note

Immunohistochemistry (Formalin-fixed) (1-2ug/ml for 30 min at RT)(Staining of formalin-fixed tissues requires heating tissue sections in 10mM Tris with 1mM EDTA, pH 9.0, for 45 min at 95°C followed by cooling at RT for 20 minutes);

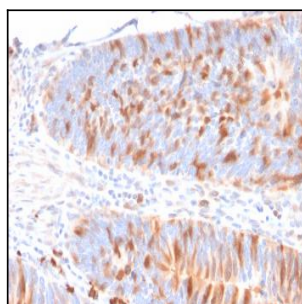


Fig. 1: Formalin-fixed, paraffin-embedded human colon stained with Methyl-CpG Binding Domain Protein 1 Mouse Monoclonal Antibody (CPTC-MBD1-1)