

36-2736: Anti-Ep-CAM / CD326 (Extracellular Domain) (Epithelial Marker) Polyclonal Antibody

Clonality :	Polyclonal
Application :	FACS,IF,WB,IHC
Reactivity :	Human
Gene :	TACSTD1
Gene ID :	4072
Uniprot ID :	P16422
Alternative Name :	Adenocarcinoma-associated Antigen; Cell Surface Glycoprotein Trop-1; EGP2; EGP314; EGP40; Epithelial Cell Adhesion Molecule; Epithelial Glycoprotein 314; ESA; KSA; TACD1; TACSTD1; TROP1; Tumor-associated Calcium Signal Transducer 1, ECS-1, Epidermal Surface Antigen 1, ESA1, FLOT2, Flotillin-2, M17S1 (Membrane Component, Chromosome 17, Surface Marker-1), REG-1, Reggie-1, Reggie-2
Isotype :	Rabbit IgG
Immunogen Information :	Recombinant human TACSTD1 protein

Description

EGP40 is a 40-43kDa transmembrane epithelial glycoprotein, also identified as epithelial specific antigen (ESA), or epithelial cellular adhesion molecule (EpCAM). It is expressed on baso-lateral cell surface in most simple epithelia and a vast majority of carcinomas with the exception of adult squamous epithelium, hepatocytes and gastric epithelial cells. EpCAM antibody has been used to distinguish adenocarcinoma from pleural mesothelioma and hepatocellular carcinoma. EpCAM antibody is also useful in distinguishing serous carcinomas of the ovary from mesothelioma.

Product Info

Amount :	20 µg / 100 µg
Content :	200 µg/ml of Ab Purified by Protein A. Prepared in 10mM PBS with 0.05% BSA & 0.05% azide. Also available WITHOUT BSA & azide at 1.0mg/ml.
Storage condition :	Antibody with azide - store at 2 to 8°C. Antibody without azide - store at -20 to -80°C. Antibody is stable for 24 months. Non-hazardous.

Application Note

Flow Cytometry (1-2ug/million cells); Immunofluorescence (1-2ug/ml); ,Western Blotting (1-2ug/ml); ,Immunohistology (Formalin-fixed) (1-2ug/ml for 30 min at RT),(Staining of formalin-fixed tissues requires boiling tissue sections in 10mM Citrate Buffer, pH 6.0, for 10-20 min followed by cooling at RT for 20 minutes),

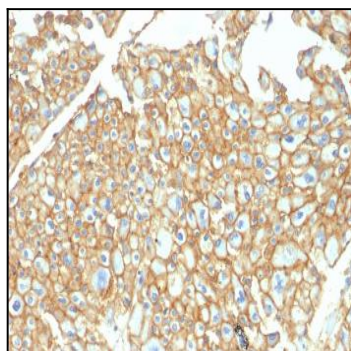


Fig. 1: Formalin-fixed, paraffin-embedded human Renal Cell Carcinoma stained with EpCAM Rabbit Polyclonal Antibody.

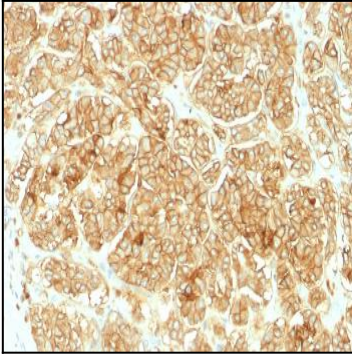


Fig. 2: Formalin-fixed, paraffin-embedded human Renal Cell Carcinoma stained with EpCAM Rabbit Polyclonal Antibody.