

## 36-2714: Anti-Ep-CAM / CD326 (Extracellular Domain) (Epithelial Marker) Monoclonal Antibody (Clone: VU-1D9)-CF488

<b>Clonality :</b>	Monoclonal
<b>Clone Name :</b>	VU-1D9
<b>Application :</b>	FACS,IF
<b>Reactivity :</b>	Human
<b>Conjugate :</b>	CF488
<b>Gene :</b>	TACSTD1
<b>Gene ID :</b>	4072
<b>Uniprot ID :</b>	P16422
<b>Alternative Name :</b>	Adenocarcinoma-associated Antigen; Cell Surface Glycoprotein Trop-1; EGP2; EGP314; EGP40; Epithelial Cell Adhesion Molecule; Epithelial Glycoprotein 314; ESA; KSA; TACD1; TROP1; Tumor-associated Calcium Signal Transducer 1 (TACSTD1); ECS-1; Epidermal Surface Antigen 1; ESA1; FLOT2; Flotillin-2; Membrane Component, Chromosome 17, Surface Marker-1 (M17S1); REG-1; Reggie-1; Reggie-2
<b>Isotype :</b>	Mouse IgG1, kappa
<b>Immunogen Information :</b>	Small cell lung carcinoma cells

### Description

EGP40 is a 40-43kDa transmembrane epithelial glycoprotein, also identified as epithelial specific antigen (ESA), or epithelial cellular adhesion molecule (Ep-CAM). It is expressed on baso-lateral cell surface in most simple epithelia and a vast majority of carcinomas. This antibody has been used to distinguish adenocarcinoma from pleural mesothelioma and hepatocellular carcinoma. This antibody is also useful in distinguishing serous carcinomas of the ovary from mesothelioma.

### Product Info

<b>Amount :</b>	100 Tests
<b>Content :</b>	Antibody Purified from Bioreactor Concentrate by Protein A/G and conjugated to various reporter molecules. Prepared in 10mM PBS with 0.05% BSA and 0.05% azide. Contact us if you require this Ab in a different format.
<b>Storage condition :</b>	Antibody with azide - store at 4 to 8°C. Antibody is stable for 24 months. Non-hazardous.

### Application Note

Flow Cytometry: 5ul per test per one million cells (or 5ul per 100ul of whole blood);Immunofluorescence (1:50-1:100)

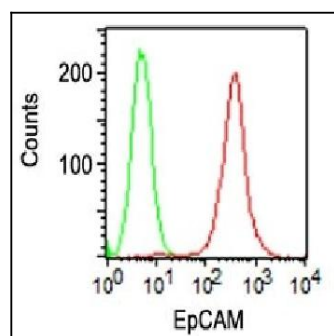


Fig. 1: Surface staining of HT29 cells using Ep-CAM Ab (VU-1D9) (red) and isotype control Ab (green).